

We understand cooling





Two brands - Trufrost and Butler team up to provide a comprehensive array of products for ice cream parlours, juice bars, patisseries, C-stores, modern food retail stores and more. Products that will make you breathe easy and see your business soar.







# CONTENTS

Soft Serve Freezers	<b>4</b>
Toppings Bars	<b>8</b>
Waffle Bakers	<b>12</b>
Cone Bakers	<b>13</b>
Batch Freezers	<b>14</b>
Batch Chillers / Shock Freezers	<b>16</b>
Frozen Drink Dispensers	<b>17</b>
Juice Dispensers	<b>19</b>
Commercial Blenders	<b>23</b>
Cold Pressed Juicers	<b>27</b>
Visi Coolers/Freezers	<b>29</b>
Multideck Chillers / Deli Counters	<b>46</b>
Chest Freezers / Coolers	<b>49</b>
Countertop Scooping Displays	<b>64</b>
Ice Machines	<b>66</b>
Foot Press Water Dispenser	<b>69</b>

# Soft Ice Cream & Frozen Yogurt





## Soft Serve Freezers Single Flavour

With a Trufrost freezer, it is easy to make soft ice cream and frozen yogurt. Just add the pre-mix from your chosen dairy or premix supplier, freeze it down and in few minutes, you are ready to serve. Trufrost freezers produce consistent quality, draw after draw. The countertop model is designed to dispense a single flavour for light duty applications.



Solo



# Soft Serve Freezers

## Twin Twist

The Trufrost floor standing and counter top models come with dual flavour twin twist option. Two models are available to suit different needs. It is easy to make soft ice cream and frozen yogurt. Just add the pre-mix from your chosen dairy or premix supplier, freeze it down and in few minutes you are ready to serve.



Tom & Jerry



2 Plus 1



## Technical Specifications - Soft Serve Freezers



Model	Flavours	Max. production	Mix Hopper capacity	Freezing cylinder capacity (Litres)	W x D x H (mm)	First Dispensing	Consecutive Dispensing# (Cups*)	Rated Input Power
Solo	1	10 Litres/Hr.	4 Litres x 1	1.5 x 1	220x660x660	13 minutes	4	700 W
2 Plus 1	Twin Twist	25 Litres/Hr.	5.5 Litres x 2	1.75 x 2	540x710x1440	9 minutes	5 + 5	2500 W
Tom & Jerry	Twin Twist	15 Litres/Hr.	4.3 Litres x 2	1.6 x 2	540x760x835	10 minutes	3 + 3	2300 W

Data based on ambient temperature of 32°C

Electricals: 220V/50Hz/1 Phase

Specifications are subject to change without prior notice due to continuous product development

# Consecutive dispensing intervals assumed at 8 seconds based on practical experience

\* 80 gms of dispensing taken for each cup



## Add **zing** to ice cream & yogurt

All you need to do is put out a few flavours of ice cream and a selection of toppings – be it chocolate or raspberry sauce or crunchy options like candy pieces, chopped nuts, crumbled cookies or baked chips. Your guests will love it.







## Countertop Toppings Bar

This stunning toppings bar is suitable for refrigerated storage and display of ice cream and yogurt toppings. This countertop refrigerated display comes with an elegant curved glass lid on a stainless steel base which houses the refrigeration system. It has a digital temperature indicator and 8 x GN 1/6 pans.



DTR-8

## Floor Standing Toppings Bar

S 900 is a floor standing refrigerated display that comes with a night cover. It comes with pan supports for 1 x GN 1/1 pan, 3 x GN 1/3 pans and 3 x GN 1/6 pans (not included). The refrigerated section in its underbelly is good for additional storage.



S 900



## Technical Specifications



Model	No. of Layers No.	Description	Dimensions W*D*H (mm)	Volume (Litres)	Temperature Range (°C)	Refrigerant	Power (Watts)
DTR-8	1	8 x GN 1/6 pans	767*612*328	67	2~12	R 134a	110

# Top glass also heated

Model	Cooling System	Product Dimensions W*D*H (mm)	Volume (Litres)	GN (530 x 325mm) compatibility	Product Weight (Kgs.)	No. of Doors / Drawers	No. of Shelves	Temperature Range (°C)	Refrigerant	Input Power (Watts)
S 900	Static	900*700*876	240	GN 1/1 Shelf per door	69	2	2	2~+10	R134a	180

Electricals: 220V/50Hz/1 Phase      Specifications are subject to change without prior notice due to continuous product development

# Please refer to information given next to the product picture.





## Rotary Waffle Bakers

The rotary waffle bakers from Butler come with an electro-mechanical timer and can accept deep-frozen, frozen pre-cooked waffles or freshly made batter for making golden crispy waffles.

- ◆ Quick and even heat spread
- ◆ Temperature control range: 124°C ~ 230°C
- ◆ Time Control Range: 99 Minutes & 50 Seconds ~ 00 Minutes & 00 Seconds
- ◆ The baking plate can revolve 180° baking evenly across both the plates

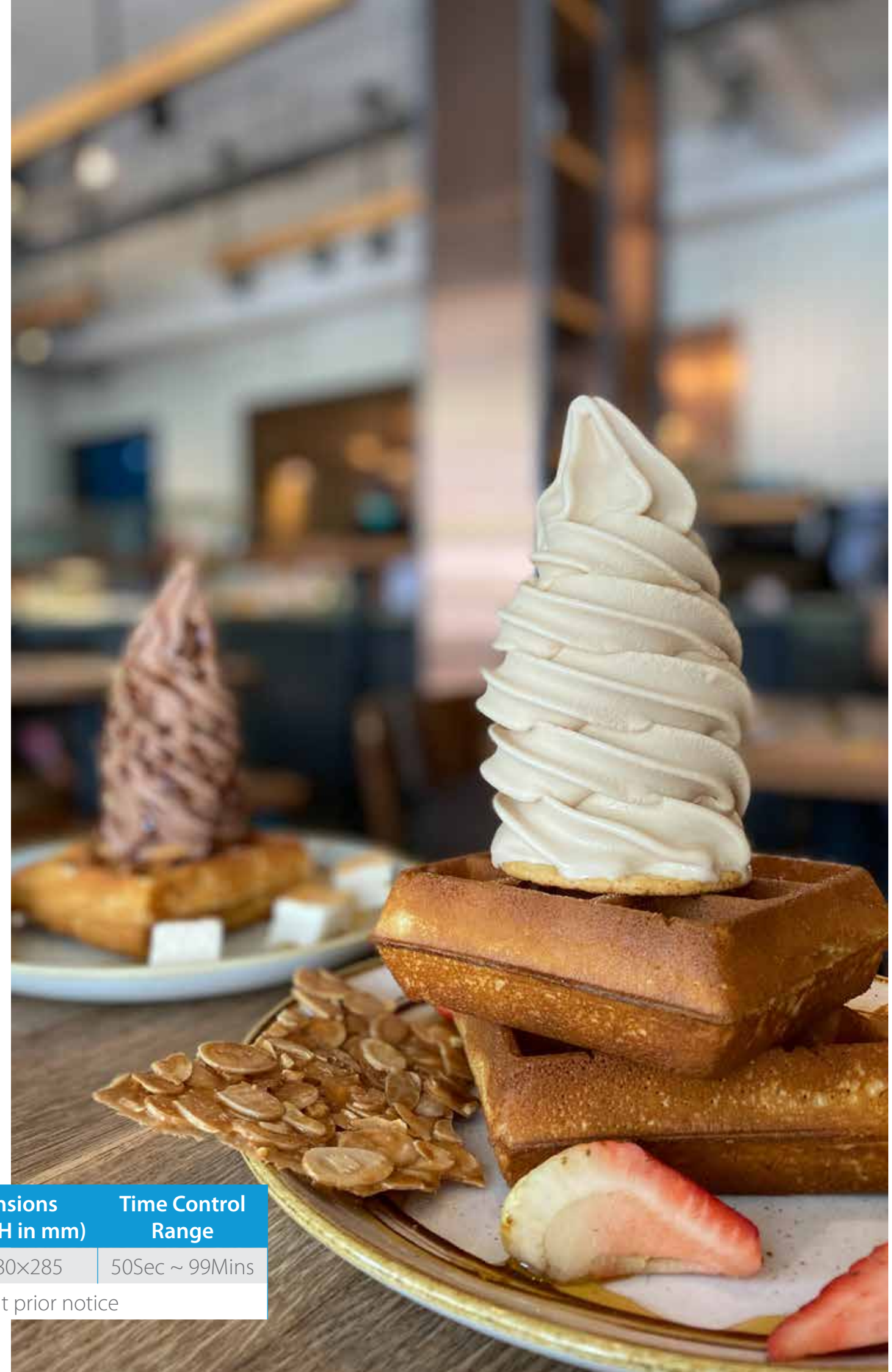


### Technical Specifications

Model	Power	Weight	Temperature Range	Baking Plate Revolve	Dimensions (W x D x H in mm)	Time Control Range
RWB-04	2kW	10kg	124°C ~ 230°C	180°	310x380x285	50Sec ~ 99Mins

Voltage: 220-240V/50Hz

Specifications are subject to change without prior notice





## Cone Bakers

Be distinct. Make your own ice cream cones. Expand your menu with these compact and reliable countertop units from Butler that serve up hot, crisp, delicious waffles and waffle cones in just minutes. Butler Cone Baker preheats to ideal temperature in minutes and provides up to 60 cones per hour. Don't forget the whipped cream, sprinkles, and a bowl of cherries to top off the sundaes. And watch your sales soar!



CB-01



Delivered with a mould for making ice cream cones

## Technical Specifications

Model	Power	Temperature Range	Dimensions (W x D x H in mm)
CB-01	1.2 KW	50°C-300°C	280x400x290

Electricals : 220 V Specifications are subject to change without prior notice due to continuous product development







## Ice Cream Batch Freezers

Trufrost Batch Freezers provide you the convenience of making your own signature ice creams, gelato and sorbets from one easy-to-use machine. Bring Trufrost quality to the restaurant and catering world. Fruits, nuts and candies can be folded in as the product is being drawn into your container. Choose from two reliable models depending on your needs.



GBF-10



GBF-20

### Technical Specifications

Model	W x D x H (mm)	Freezing Cylinder	Max Production	Refrigerant	Rated Input Power	Drive Motor	Weight
GBF-10	596 x 530 x 400	4.7 L	10L / hr	R 134a	800 W	1.375 HP	50 Kg
GBF-20	455 x 710 x 755	5.4 L	20L / hr	R 404a	2000 W	1.5 HP	100 Kg

Electricals: 220V/50Hz/1 Phase  
continuous product development

Specifications are subject to change without prior notice due to







## Blast Chillers / Shock Freezers For Ice Cream & Gelato

Once out of the batch freezer, at a temperature of -7/-8°C, not all water in ice cream is frozen. So you need to bring its temperature down to -14°C or display or even down to -18°C for storage in a freezer. Trufrost Shock freezers bring ice cream to -18°C in the shortest possible time. Free water turns into micro-crystals, which preserve the product, preventing changes to its quality, consistency and texture and also allows your ice cream to maintain its 'overrun'. Available in 3 capacities, they are suitable for both GN 1/1 and EN 400 x 600 mm tray sizes.

(Please ensure that the foodstuff to be blast chilled/frozen in these models is placed in open condition in the trays, and not in packages)



BCF-5



BCF-10



BCF-13

### Technical Specifications



Model	Cooling System	Dimensions W*D*H (mm)	Pan Supports EN & GN 1/1		Chilling Capacity +70°C to +3°C	Freezing Capacity +70°C to -18°C	Refrigerant	Input Power (W)
			40mm deep	65mm deep				
BCF-5	Ventilated	800*800*990	5	3	20kgs in 90mins	15kgs in 240mins	R404a	760
BCF-10	Ventilated	800*800*1520	10	7	40kgs in 90mins	28kgs in 240mins	R404a	1500
BCF-13	Ventilated	800*800*1780	13	9	60kgs in 90mins	38kgs in 240mins	R404a	1860

Electricals: 220V/50Hz./Single Phase

Pans not supplied with machine

Specifications are subject to change without prior notice due to continuous product development



## Juice Dispensers

These Trufrost dispensers are ideal for non-carbonated beverages, built with an energy efficient refrigeration system, they are easy & quick to dismantle and clean. They come with a shock proof, non-toxic polycarbonate bowls of 8 litres. capacity with independent mixing control. JD-8.2 comes with a spray mechanism that creates a fountain effect and is suitable for syrup based, watery juice. This model is however not recommended for pulp based drinks which are better dispensed in our model Turia-12 shown ahead.



JD-8.2



### Technical Specifications



Model	W x D x H (mm)	No. of bowls
JD-8.2	290 x 400 x 680	2

Electricals: 220V/50Hz/1 Phase

Specifications are subject to change without prior notice







## Multipurpose Dispensers

Versatile counter top models for the cooling and dispensing of a variety of popular Indian drinks such as Jal Jeera, Buttermilk, Lassi, Aam (mango) Panna & other natural juices with light pulp. The paddle is designed to stir the beverages and prevent any sedimentation and the machines are easy to clean and sanitize.



Turia 12 (JJ 12)



Chach/ Buttermilk



Jal Jeera



Sweet Lassi



Aam Panna

### Technical Specifications



Model	W x D x H (mm)	No. of bowls
Turia 12	270x410x724	12 litres

Electricals: 220V/50Hz/1 Phase

Specifications are subject to change without prior notice





## Chocolate Melter

The Butler Chocolate Melters are designed to not only melt your chocolate, but keep it at the perfect temperature throughout your food service. It comes with a covered stainless steel bowl, which is removable for easy cleaning. These can be used to melt Pure and Compound Chocolate, Hot Sauces and Chocolate Dips and more. It comes with a Temperature Controller to control the heat. Although the low wattage is designed to ensure that the chocolate does not get burnt, constant manual stirring is a must for optimal results.



CMM-4

### Technical Specifications

Model	Dimensions W x D x H (mm)	Tank Dimensions W x D x H (mm)	Temperature Range	Capacity	Power	Net Weight
CMM-4	203x355x292	176x 325x100	30~95°C	4 Litre	800W	5.0 Kg

Electricals: 220V/50Hz/1 Phase

Specifications are subject to change without prior notice due to continuous product development



If you like it fresh





## Commercial Cold Pressed Juicers



Butler's Commercial Cold Pressed Juicer comes with a robust 4 hour heavy duty motor designed to extract juices faster. It expels dry pulp resulting in an enhanced juice yield. Its special masticating system presses the food, releasing their deeply entrenched nutrients and enzymes. The slow RPM ensures a richer texture of juices.

Comes with

- ◆ 1 Polyethylenimine (PEI) strainer
- ◆ 1 grey transparent ice cream strainer
- ◆ 2 grey transparent pulp containers
- ◆ 1 smoothie strainer

### Technical Specifications



Model	Power	Rated Working Time	Rated Interval Time	Dimensions (WxDxH)
CPJ-600	240W	4 Hours	30 min	250 x 160 x 470 mm

Voltage: 220-240V/50Hz

Specifications are subject to change without prior notice







# Commercial Blenders with Acoustic Enclosure - Premia series

Butler TruBlend blenders are ideal for cafe's, foodcourts, juice bars, restaurants, bars and clubs. Their simplicity lies in their 'easy-to-use' manual controls; a variable speed dial and pulse button which allow you to have just as much control as you might want from a professional machine. The TruBlend AQ Premia model features an advanced acoustic enclosure that reduces blending noise by up to 80% without compromising on its ruggedness or your customers' experience, digital controls, advanced metal gear connector and metal seal connector. The specially designed 1.5L jar and rugged blades crush ice in seconds in blended drinks and is perfect for making frothy milkshakes, smoothies, frappes, juices and cold coffee.



## Technical Specifications



Model	Dimensions (WxDxH) mm	Power	Motor Power	Jar Capacity	Net Weight	Timer
TruBlend AQ Premia	240x280x540	1500W	2.25HP	1.8 Litre	11Kg	Yes

Voltage: 220-240V/50Hz  
 Specifications are subject to change without prior notice



# Commercial Blenders with Acoustic Enclosure

Butler TruBlend blenders are ideal for cafe's, foodcourts, juice bars, restaurants, bars and clubs. Their simplicity lies in their 'easy-to-use' manual controls; a variable speed dial and pulse button which allow you to have just as much control as you might want from a professional machine. It crushes ice in seconds in blended drinks and is perfect for making frothy milkshakes, smoothies, frappes, juices and cold coffee. TruBlend 2.2AQT model features an advanced acoustic enclosure that reduces blending noise by up to 80% without compromising on its ruggedness or your customers' experience. The pulse function can also be used to wet clean the jars after use.



## Technical Specifications

Model	Dimensions (WxDxH) mm	Power	Motor Power	Jar Capacity	Net Weight	Timer
TruBlend 2.2 AQT	240x280x540	1680W	2.2 HP	2.5 Litre	9.7Kgs	Yes

Voltage: 220-240V/50Hz

Specifications are subject to change without prior notice due to continuous product development





## Commercial Blenders

Butler TruBlend blenders are ideal for caf's, food-courts, juice bars, restaurants, bars and clubs. Their simplicity lies in their 'easy-touse' manual controls; a variable speed dial and pulse button which allow you to have just as much control as you might want from a professional machine. It crushes ice in seconds in blended drinks and is perfect for making frothy milkshakes, smoothies, frappes, juices and cold coffee. The pulse function can also be used to wet clean the jars after use.



### Technical Specifications



Model	Dimensions (WxDxH) mm	Power	Motor Power	Jar Capacity	Timer	Net weight
TruBlend 2.2 T	235 x 265 x 545	1680W	2.2 HP	2.5 Litre	Yes	5.75Kg

Voltage: 220-240V/50Hz

Specifications are subject to change without prior notice due to continuous product development



Inviting vertical displays with glass doors





# Visi Coolers - Premia Series

## (With top mounted compressors)

These Trufrost Premia Series plug-in type 2 glass door upright Coolers come with top mounted compressors. They provide an ultra rich and pleasing 'top to bottom' view of the displayed foodstuff – be it ice creams or any other packaged food. The cabinet interiors come with LED lights to enhance the quality of display.



VC-1250 Premia



VC-1800 Premia



VF-1250 Premia, VF-1800 Premia

### Visi Coolers

### Visi Freezer

## Key Features

- Forced air circulation
- Adjustable shelves
- Interior LED lights
- Universal wheels, front with brake
- Double pane glass including Low E in Visi Coolers
- Self Closing doors
- Self evaporating drip tray
- Low-maintenance condenser
- Standard ambient for Visi Coolers +35°C at 65%RH

## Technical Specifications



Model	Volume (L)	Door type	Shelves	Power	Dimensions (wxdxh) mm	Temperature range	Refrigerant	No. of Compressors
VC-1250 Premia	1250	2 Hinge	10	412W	1260x750x2092	+1°C ~ +10°C	R134a	1
VC-1800 Premia	1800	3 Hinge	15	675W	1880x750x2092	+1°C ~ +10°C	R134a	1
VF-1250 Premia	1250	2 Hinge	10	1472W	1260x750x2092	-18°C ~ -22°C	R404a	2
VF-1800 Premia	1800	3 Hinge	15	1850W	1880x750x2092	-18°C ~ -22°C	R404a	2

Electricals: 220V/50Hz./Single Phase

Specifications are subject to change without prior notice due to continuous product development

Working condition for open chillers/glass door freezer is class 3 (Room Temp. 25°C and 60%RH)



FRUITCO

FRUITCO

FRUITCO

FRUITCO

PINK GUAVA





## Visi Coolers

Trufrost brings to India a contemporary range of merchandising solutions that help you increase your sales by showing beverage bottles, cans, juice packs and other foodstuff at their very best. These innovative cooling displays are available in 50 to 1500 litre capacities and 1 Door/ 2 Door / 3 Door variants. They are designed to keep products at the optimum temperature and display them in a way that causes them to jump off the shelves into shopping baskets.



VC-50



VC-100



VC-220



VC-200, VC-300,  
VC-330, VC-390,  
VC-400 (NEW),  
VC-451 Copper Plus



VC-331,  
VC-441



VC-500  
VC-600NF (New)



VC-700 NF, VC-901,  
VC-1000 NF,  
VC-1251 Copper Plus

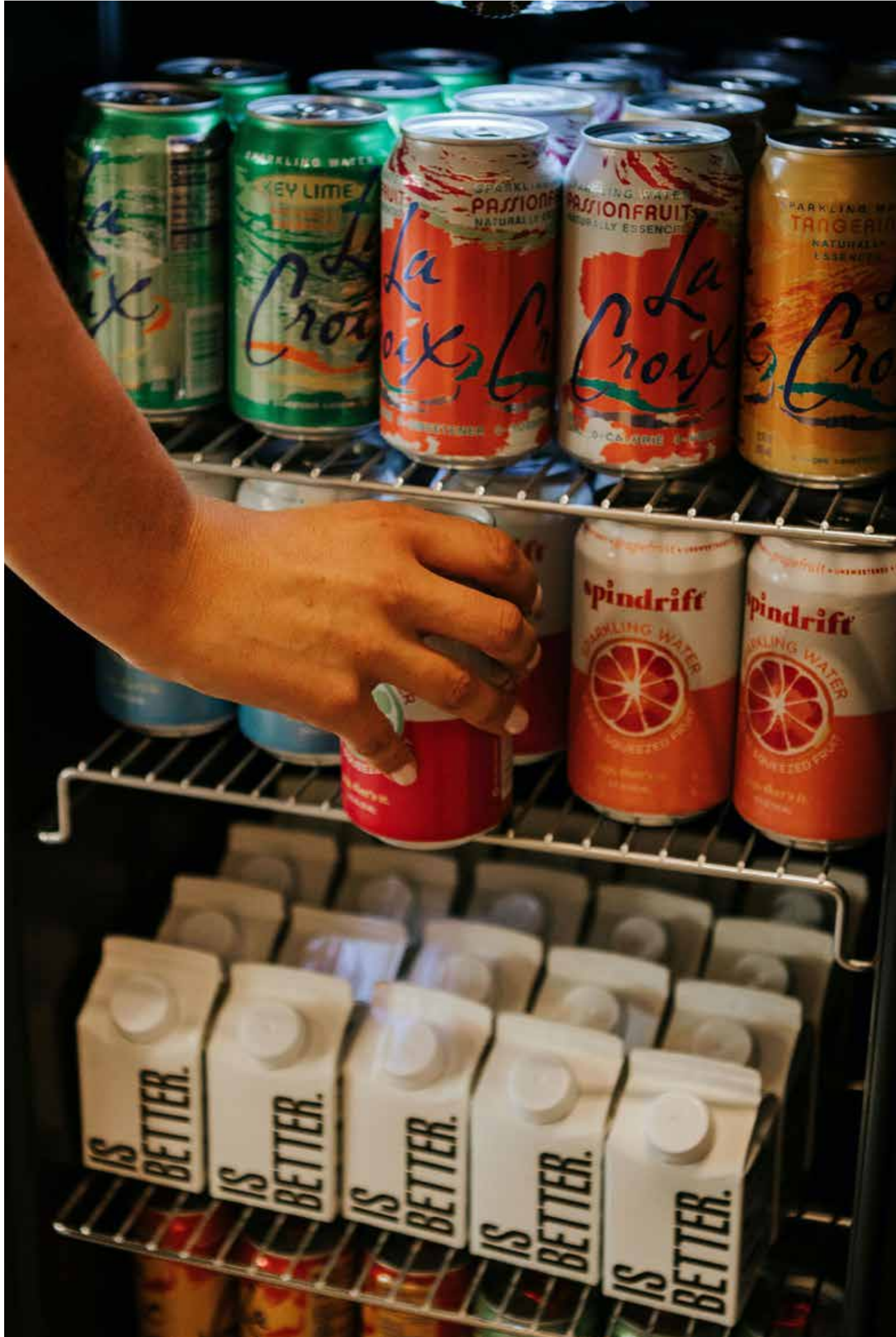


VC-999 NF



VC-1500 NF





## Double Door Visi Coolers - Premia Series

Trufrost has introduced a model in the Premia series of showcase coolers in a 2-door variant. It is designed to keep products at the optimum temperature and display them in a way that causes them to jump off the shelves into shopping baskets.



VC-600-2D Premia



## Visi Coolers - Black

Trufrost has just rolled out model in black series of showcase coolers in 1 Door variant. It is designed to keep products at the optimum temperature and display them in a way that causes them to jump off the shelves into shopping baskets.



VC-440 Black





## Crystal Tower Premia

This newly launched panoramic showcase from Trufrost is poised to be a show-stopper. It presents a 4 side panoramic view of your display enhanced by vertical LED lighting. It comes with a digital temperature display, 4 adjustable shelves, castors for easy mobility and air duct to remove condensation on the glass. The base and the body are specially crafted in black titanium finish stainless steel to give a premium look to your store ambience. These stunning showcases come with a reliable ventilated refrigeration system and an auto defrost that ensures uniform cooling. It is ideal for showcasing cakes, pastries, beverage bottles, canned drinks, packed savouries and more.

### Key Features

- Panoramic 4 side double glass
- Digital temperature controller & display
- Elegant & fashionable black stainless steel
- Ventilated cooling
- Chrome plated adjustable shelves
- Brilliant LED lighting
- Air duct outside the glass to remove condensation
- Castors for easy mobility/ cleaning





# Technical Specifications - Visi Coolers



Specification	Gross Volume (Litres)	w x d x h (inches)	Temperature Range	Power (w)	Lock	Defrost	No. of Lids / Doors	No. of shelves	Interior Light	Wheels / Castors	No. of vompessors	Refrigerant
VC-50	50	18 x 20 x 20	2 - 8°C	65	No	Yes	1	2	LED light	No	1	R134a
VC-100	100	18 x 20 x 33	2 - 8°C	65	No	Yes	1	4	LED light	No	1	R134a
VC-220	220	21 x 21 x 62	2 - 8°C	67.9	Yes	Yes	1	3	Normal light	No	1	R600a
VC-330	300	21 x 21 x 69	2 - 8°C	230	Yes	Manual	1	4	Yes	4	1	R600a
VC-331	300	22 x 21 x 66	2 - 8°C	210	Yes	Automatic	1	3	Yes	4	1	R600a
VC-390	360	21 x 24 x 69	2 - 8°C	280	yes	manual	1	4	Yes	4	1	R600a
VC-440 Black	400	24 x 24 x 75	2 - 8°C	190	Yes	Automatic	1	5	Yes	Adjustable legs	1	R600a
VC-441	400	22 x 21 x 72	2 - 8°C	220	Yes	Automatic	1	4	Yes	4	1	R600a
VC-451 Copper Plus	410	23 x 28 x 71	2 - 8°C	284	Yes	Automatic	1	4	LED light	Yes	1	R134a
VC-500	475	25 x 24 x 77	2 - 8°C	270	Yes	Automatic	1	5	Yes/ 1 LED	2/2	1	R600a
VC-600NF (New)	532	25 x 28 x 81	2 - 8°C	425	Yes	Automatic	1	5	Yes/ 1 LED	4	1	R134a
VC-600-2D Premia	550	26 x 26 x 77	2 - 8°C	400	Yes	Automatic	1	5	Yes/ 1 LED	4	1	R134a
VC-700NF	680	35 x 24 x 78	2 - 8°C	349	Yes	Automatic	2	8	Yes / 2LEDs	Yes	1	R134a
VC-901	900	44 x 23 x 80	2 - 8°C	430	Yes	Automatic	2	10	2 LED	4	1	R134a
VC-999 NF	1000	44 x 23 x 78	2 - 8°C	475	Yes	Automatic	2	10	2 LED	4	1	R134a
VC-1000NF	1000	44 x 27 x 82	2 - 8°C	475	Yes	Automatic	2	8	Yes / 2LEDs	Yes	1	R134a
VC-1251 Copper Plus	1200	45 x 29 x 86	2 - 8°C	466	Yes	Automatic	2	12	Yes / 2LEDs	Yes	1	R134a
VC-1500NF	1495	71 x 27 x 82	2 - 8°C	687	Yes	Automatic	3	15	Yes / 5LEDs	Yes	1	R134a

Electricals: 220V/50Hz/1 Phase Specifications are subject to change without prior notice due to continuous product development  
 Working condition for open chillers/glass door freezer is class 3 (Room Temp. 25°C and 60%RH)

Specification	Gross Volume (Litres)	w x d x h (inches)	Temperature Range	Power (w)	Lock	Fan	No. of Lids / Doors	No. of shelves	Interior Light	Wheels / Castors	No. of Compressors	Refrigerant
VC-200	180	17 x 20 x 55	2 - 8°C	170	Yes	Yes	1	3	LED light	No	1	R600a
VC-300	280	21 x 20 x 61	2 - 8°C	200	Yes	Yes	1	3	LED light	Yes	1	R600a
VC-400 (New)	380	23 x 20 x 70	2 - 8°C	240	Yes	Yes	1	4	LED light	Yes	1	R600a

Electricals: 220V/50Hz/1 Phase Specifications are subject to change without prior notice due to continuous product development  
 Working condition for open chillers/glass door freezer is class 3 (Room Temp. 25°C and 60%RH)



Model	Product	No. of Layers	Dimensions W*D*H (mm)	Volume (Litres)	Temperature Range (°C)	Front Glass	Refrigerant	Power (Watts)
Crystal Tower Premia	4 Side Glass Panoramic Cake Showcase	5 No. Description	675x695x1800	660	2~8	Double Glass	R 290a	590

Electricals: 220V/50Hz/1 Phase Specifications are subject to change without prior notice due to continuous product development

# Ice Cream and the laws of attraction





## Traditional Visi Freezers

Trufrost upright visi freezers are known for their reliability and provide a pleasing view of the displayed foodstuff – be it ice creams or any other packaged frozen food. The VF-400 and VF-1000 are among our fast selling models. They have a ventilated cooling system with automatic defrost and are fitted with LED lights to enhance the quality of display.



VF-400NF



VF-1000NF

← New upgraded model with 2 compressors

## Technical Specifications - Visi Freezers



Specification	Gross Volume (Litres)	w x d x h (inches)	Temperature Range	Power (w)	Lock	Defrost	No. of Lids / Doors	No. of shelves	Interior Light	Wheels / Castors	No. of Compressors	Refrigerant
VF-1000NF	950	48 x 28 x 78	-18°C ~ -22°C	1100	Yes	Automatic	2	10	Yes / 2LEDs	Yes	2	R404a
VF-400NF	400	26 x 28 x 78	-18°C ~ -22°C	570	Yes	Automatic	1	5	Yes / 2LEDs	Yes	1	R404a

Electricals: 220V/50Hz/1 Phase      Specifications are subject to change without prior notice due to continuous product development  
 Working condition for open chillers/glass door freezer is class 3 (Room Temp. 25°C and 60%RH)







## Plug-in Multideck Chillers

The vertical open type refrigerated plug-in cabinets by Trufrost are designed to enhance product display and stimulate impulse buying in strategic areas of the store, such as in front of cash registers or promotional islands. They are ideal for packaged dairy products, beverages, packaged food, fruits & vegetables, and even certain meat & poultry items. These Multidecks have the full condensing unit system housed within the cabinet and eliminate the need for the installation of an external condenser. They offer maximum flexibility as they can be moved to different locations within the store or can be positioned away from walls as there is no requirement for pipe work to be routed outside. Model PMD-1800 is finished in highly polished stainless steel and PMD-1310 in a pleasing pre-coated finish. Both the models add a touch of class to any store.



PMD-1310, PMD-1800

### Key Features

- ◆ High efficiency and balanced refrigeration system
- ◆ LED lighting in each shelf
- ◆ Optimised shelf depth enables more effective displayable volume
- ◆ Night curtain minimizes energy loss
- ◆ Off-cycle defrost reduces the energy consumption
- ◆ Eco friendly R404a refrigerant

## Technical Specifications - Plug-in Multidecks Stainless Steel



Product	Model	Dimensions wxdxh (in mm)	Capacity (in Litrs)	Temperature (in °C)	Power	Rated Current	Energy consumption kW per day	Refrigerant	Shelves
Plug In Multideck Chiller	PMD-1310	1310x660x2000	565L	+2 ~ +8	1300 W	10.5A	38.8	R290a	4
Plug In Multideck Chiller	PMD-1800	1800x670x2000	822L	+2 ~ +8	1800 W	10A	23.4	R404a	4

Electricals: 220V/50Hz./Single Phase      Specifications are subject to change without prior notice due to continuous product development  
 Working condition for open chillers/glass door freezer is class 3 (Room Temp. 25°C and 60%RH)





## Chest Freezers & Coolers





CFC Free



Large Cooling Power

## Imported Conventional 2-in-1 Convertible Freezers / Chillers

Trufrost 2-in-1 hard top chest freezers conveniently double up as chillers at the turn of a knob and are available in a wide variety of sizes ranging from 100 to 800 litres to suit every conceivable need. You can also choose between single, double and three lid variants.



### Premia Series

- CF-110
- CF-110 Premia



### Premia Series

- CF-220 Dlx.
- CF-220 Premia
- CF-300 Dlx.
- CF-300 Premia



### Diamond Series

- CF-550 2D



### Diamond Series

- CF 550 2D Diamond
- CF 800 2D Diamond





CFC Free



Large Cooling Power

Made in India

## Conventional 2-in-1 Convertible Freezers / Chillers

Trufrost 2-in-1 hard top chest freezers conveniently double up as chillers at the turn of a knob and are available in a wide variety of sizes ranging from 100 to 800 litres to suit every conceivable need. You can also choose between single, double and three lid variants.



### Single Lid Models

- CF-111
- CF-222
- CF-333



### Double Lid Models

- CF-333 2D
- CF-444 2D
- CF 555 2D



### Three Lid Models

- CF-777 3D

# Technical Specifications - Chest Freezers



Model	Gross Volume (L)	w*d*h (mm)	Temperature Range	Power (W)	Refrigerent	Lock	Defrost	No. of Lids / Doors	No. of Baskets	Wheels / Castors
CF-110	100	560*595*790	+2°C -20°C	110	R600a	Yes	Manual	1	1	Yes
CF-110 Premia	100	505*525*835	+2°C -20°C	85	R 600a	Yes	Manual	1	1	Yes
CF-220 Dlx	200	860*540*835	+2°C -20°C	103	R 600a	Yes	Manual	1	1	Yes
CF-220 Premia	220	855*540*835	+2°C -20°C	100	R 600a	Yes	Manual	1	1	Yes
CF-300 Dlx	276	1080*600*835	+2°C -20°C	115	R 134a	Yes	Manual	1	1	Yes
CF-300 Premia	305	1120*600*835	+2°C -20°C	120	R 600a	Yes	Manual	1	1	Yes
CF-500-2D	470	1523*725*842	+2°C -20°C	253	R 134a	Yes	Manual	2	2	Yes
CF-550-2D	550	1683*670*880	+2°C -20°C	310	R 290	Yes	Manual	2	2	Yes
CF-550-2D Diamond	550	1683*670*880	+2°C -20°C	310	R 290	Yes	Manual	2	2	Yes
CF-800-2D Diamond	800	1945*757*880	+2°C -20°C	330	R 290	Yes	Manual	2	2	Yes

Electricals: 220V/50Hz/1 Phase

Specifications are subject to change without prior notice due to continuous product development

Model	Gross Volume (L)	w*d*h (mm)	Temperature Range	Power (W)	Refrigerent	Lock	Defrost	No. of Lids / Doors	No. of Baskets	Wheels / Castors
CF-111	100	560*595*790	+2°C -20°C	110	R600a	Yes	Manual	1	1	Yes
CF-222	220	815*720*845	-18°C ~ -24°C (F) +0°C ~ +10°C (C)	154	R 600a	Yes	Manual	1	1	Yes
CF-333	330	1115*720*845	-18°C ~ -24°C (F) +0°C ~ +10°C (C)	295	R 290	Yes	Manual	1	1	Yes
CF-333 -2D	330	1115*720*845	-18°C ~ -24°C (F) +0°C ~ +10°C (C)	295	R 290	Yes	Manual	2	1	Yes
CF-444-2D	440	1395*720*845	+2°C -20°C	295	R 290	Yes	Manual	2	2	Yes
CF-555-2D	550	1685*720*845	-18°C ~ -24°C (F) +0°C ~ +10°C (C)	395	R 290	Yes	Manual	2	2	Yes
CF-777-3D	740	1810*755*840	+2°C -20°C	320	R 600a	Yes	Manual	3	2	Yes

Electricals: 220V/50Hz/1 Phase

Specifications are subject to change without prior notice due to continuous product development









## Dual Temperature Freezers / Chillers



Trufrost dual temp freezers/chillers have two segregated storage compartments – ideal for storing ice-creams & frozen foods in one and dairy products or beverages in the other.

### Models available

- DT-300
- DT-350 Diamond
- DT-444



## Milk / Bottle Chiller

Trufrost Milk Chillers come with a food-grade stainless steel inner compartment that allows for optimum temperature management of pre-refrigerated milk. The product is suitable for chilled milk to be poured directly into the tank. It is also suitable for storing & chilling bottled beverages and other food-stuff.



### Models available

- BC-400-2D-SS



## Technical Specifications



Specification	Models	Gross Volume (Litres)	WxDxH (Inches)	Temperature Range	Power (W)	Refrigerent	Lock	Defrost	No. of Lids / Doors	No. of Baskets	Wheels / Castors
Dual Temp Freezers	DT-300	162F/120C*	46x24x33	+2°C -20°C	195	R134a	Yes	Manual	2	1	Yes
	DT-350 Diamond			+2°C -20°C							
	DT-444	200F/225C*	55x28x34	-18°C ~ -24°C (F) +0°C ~ +10°C (C)	268	R290	Yes	Manual	2	1	Yes
Milk Chiller	BC-400-2D-SS	360	50x26x33	2~10°C	233	R134a	Yes	Manual	2		Yes

Electricals: 220V/50Hz/1 Phase

Specifications are subject to change without prior notice due to continuous product development

\*F = Freezer, C = Chiller





## Glass Top Freezers - Deluxe series

These Trufrost Flat Glass Freezers add a new dimension to the routine glass tops available in the market. They come with LED light to enhance the product display - feature that is a retailer's delight. GT 440 Dlx and GT 650 Dlx come with 4 and 6 fully loaded baskets respectively (2 of which are QDI baskets), for easy access & convenient segregation of the displayed items. They come with an extra thick 75 mm insulation and an elegant aluminium door frame that contrasts well with the white freezer body.



### Models available

- GT-440 Dlx (with 4 baskets)
- GT-650 Dlx (with 6 baskets)



# Introducing Glass Top Freezers that **stand out**



LED Light



Full basket



Prepainted aluminum plate

Aluminium alloy door frame



Double row Casters



Temperature display

## Key Features

- New style flat sliding glass lid
- Fully Automatic operation
- 75 mm thickness insulation
- Exterior white finish
- Aluminium door frame
- Adjustable thermostat
- Main power indicator
- Defrost water drain hole
- Full basket as standard
- Interior LED light as standard
- Four caster wheels
- Environmentally friendly





## Technical Specifications



Specification	Models	Gross Volume (Litres)	WxDxH (Inches)	Temperature Range	Power (W)	Refrigerent	Lock	Defrost	No. of Lids / Doors	No. of Baskets	Wheels / Castors
Flat Glass Top Freezers	GT-440 DLX	400	50x27x34	≤-18°C	210	R290	Yes	Manual	2	4 (2 standard + 2 QDI)	4
	GT-650 DLX	600	71x27x34	≤-18°C	252	R290	Yes	Manual	2	6 (4 standard + 2 QDI)	6

Electricals: 220V/50Hz/1 Phase

Specifications are subject to change without prior notice due to continuous product development

\*F = Freezer, C = Chiller







## Flat Glass Top Freezers

Trufrost Flat Glass Freezers are a retailer's delight and come with fully loaded baskets for easy access & convenient segregation of frozen food.



### Models available

- GT-100 (with 1 basket)

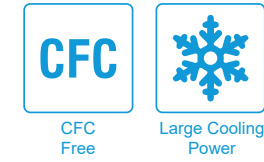


### Models available

- GT-200 (with 1 basket)
- GT-350 (with 4 baskets + 1 QDI)
- GT-355 (with 2 baskets)
- GT-455 (with 2 baskets)
- GT-555 (with 2 baskets)







## Curved Glass Top Freezers

Trufrost Curved Glass Freezers are a retailer's delight. GTC 330 and 450 come with 3 baskets and GTC 625 has 9 baskets with 18 separators for easy access & convenient segregation of frozen food.



GTC 165 Premia  
(with 1 basket + 1QDI)



GTC 300 Premia  
(with 2 baskets + 1QDI)



GTC 400 Spl  
(with 3 baskets + 1QDI)  
GTC 450 (with 5 baskets)



GTC 625 (with 9 baskets  
& 18 Separators)



GTC 700 Premia  
(with 4 baskets + 2QDI)

# Technical Specifications



Specification	Flat Glass Top Freezers						Curved Glass Top Freezers					
	GT-100	GT-200	GT-350 Premia	GT-355	GT-455	GT-555	GTC-165 Premia	GTC-300 Premia	GTC-400 Spl.	GTC-450	GTC-625	GTC-700 Premia
Gross Volume (Litres)	100	200	340	330	430	530	165	290	390	430	610	690
w*d*h (inches)	23x21x33	32x27x31	49x24x32	44x27x31	55x27x31	66x27x31	25x28x36	39x26x36	50x26x36	50x27x34	71x27x34	74x32x34
Temperature Range	≤-20°C	+5°C ~ -27°C	≤-18°C	+5°C ~ -27°C	+5°C ~ -27°C	+5°C ~ -27°C	≤-22°C	≤-22°C	≤-22°C	≤-20°C	≤-20°C	≤-22°C
Power (W)	133	290	320	320	345	370	215	215	215	200	240	240
Refrigerent	R134a	R290	R290	R290	R290	R290	R290	R290	R290	R290	R290	R290
Lock	Yes	Yes	Yes	Yes	Yes	Yes	Yes	Yes	Yes	Yes	Yes	Yes
Defrost	Manual	Manual	Manual	Manual	Manual	Manual	Manual	Manual	Manual	Manual	Manual	Manual
No. of Lids / Doors	2	2	2	2	2	2	2	2	2	2	2	2
No. of Baskets	1	1	4 + 1QDI	2	2	2	1 + 1QDI	3 + 1QDI	3 + 1QDI	5	9	4 + 2QDI
Wheels / Castors	Yes	Yes	Yes	Yes	Yes	Yes	Yes	Yes	Yes	Yes	Yes	Yes

Electricals: 220V/50Hz/1 Phase

Specifications are subject to change without prior notice due to continuous product development





## Traditional Island Freezers

Trufrost Island Freezers are a retailer's delight and come with fully loaded baskets for easy access & convenient segregation of frozen food. IL 660 comes with 6 baskets.



## Technical Specifications



Specification	Island Freezers IL-660
Gross Volume (Litres)	660
External dimensions w*d*h (mm)	1860x820x560
Internal dimensions w*d*h (mm)	1620x570x414.5
Temperature Range	≤-18°C
Power (W)	355
Refrigerent	R290
Lock	Yes
Defrost	Manual
No. of Lids / Doors	2
No. of Baskets	6
Wheels / Castors	Yes

Electricals: 220V/50Hz/1 Phase  
 Specifications are subject to change without prior notice  
 due to continuous product development



IN CASE OF  
EMERGENCY  
BREAK GLASS





Wow Gelato - 7



Wow Gelato - 7

## Ice cream & Gelato Scooping Displays

These stunning displays for ice cream & gelato can be used in different ways – as countertops or intelligently built-in to the counter to merge with your dessert buffet spread. You can choose between 2 models that are draped in elegant curved glass and built on a stainless steel base that houses the refrigeration system and have a digital temperature indicator. You have the flexibility to display more flavours of ice cream or gelato by using GN 1/6 pans (not supplied with the machine). The 2 Wow Gelato models come with with 6 x GN1/3 and 7 x GN1/3 pans respectively.

### Technical Specifications



Model	Pans No.	Pans Description	Dimensions W*D*H (mm)	Volume (Litres)	Temperature Range (°C)	Front Glass	Refrigerant	Power (Watts)
Wow Gelato - 7	7	GN 1/3	1380*742*904	142	-13 ~ -22	Heated	R 404a	1400
Wow Gelato - 6	6	GN 1/3	1170*850*550	122	-13 ~ -22	Heated	R 404a	1300

Electricals: 220V/50Hz./Single Phase

Specifications are subject to change without prior notice due to continuous product development







## Countertop Scooping Displays

This stunning display comes with an elegant curved glass lid on a stainless steel base that houses the refrigeration system and have a digital temperature indicator. It comes with 4 x 5L pans. However, you have the flexibility to display more flavours of ice cream or gelato by using GN 1/6 pans (not supplied with the machine).



DTF-4

### Technical Specifications



Model	Pans No.	Pans Dimensions (mm)	Dimensions W*D*H (mm)	Volume (Litres)	Temperature Range (°C)	Refrigerant	Power (Watts)
DTF-4	4	360*165*115	805*670*360	67	-18~-22	R 134a	140

Electricals: 220V/50Hz./Single Phase

Specifications are subject to change without prior notice





## Countertop Convertible Freezer & Chiller

This stunning display comes with an elegant curved glass lid on a stainless steel base that houses the refrigeration system and have a digital temperature indicator. It comes with 4 x 5L pans. However, you have the flexibility to display more flavours of ice cream or gelato by using GN 1/3 pans (not supplied with the machine).



DTFR-4

### Technical Specifications



Model	Pans No.	Pans Dimensions (mm)	Dimensions W*D*H (mm)	Volume (Litres)	Temperature Range (°C)	Refrigerant	Power (Watts)
DTFR-4	4	360*165*115	805*666*356	67	+2 ~ -22	R 290	220

Electricals: 220V/50Hz./Single Phase

Specifications are subject to change without prior notice



# Ice Machines

Ice is a food product and deserves due attention when planning your juice bar. It allows you to remain in control of water quality and purity. Trufrost offers high quality ice cube making machines with self-contained storage bins considered highly appropriate for juice bars. They produce full dice ice cubes that are consistent in shape and size. Models IC 35BWA & IC 50BWA can also take in a bottled water jar on top. IC-35BWA, IC-50BWA & IC-100 models are suitable for undercounter applications.



IC-35BWA



IC-50BWA



IC-100



IC-200 / 300 / 455 / 900

## Technical Specifications



Model	Rated Capacity / 24 hrs.*	Ice Storage Capacity	Power (w)	Cube Shape / Size	Refrigerant	Dimensions wxdxh (in mm)	Compatible Storage Bin
IC 35BWA	36 Kg	15 Kg	280	Dice / 22*22*22 mm	R404a	500*450*840	n/a
IC 50BWA	50 Kg	18 Kg	320	Dice / 28*28*22 mm	R404a	500*590*850	n/a
IC 100	98 Kg	36 Kg	600	Dice / 28*28*22 mm	R404a	660*685*920	n/a
IC 220	220 Kg	150 Kg	850	Dice / 28*28*22 mm	R404a	560*830*1718	ISB-150
IC 300	318 Kg	125 Kg / 170 Kg	1420	Dice / 28*28*22 mm	R404a	760*830*1718	ISB-125 / ISB-170
IC 455	455 Kg	125 Kg / 170 Kg	2300	Dice / 28*28*22 mm	R404a	760*830*1893	ISB-125 / ISB-170
IC 950	950 Kg	315 Kg	4500	Dice / 28*28*22 mm	R404a	1227*973*2048	ISB-315

\* At 10°C incoming water and 10°C air temperature  
Specifications are subject to change without prior notice

Electricals: 220V/50Hz./Single Phase, IC-950: 380V/50Hz./3Phase  
Height for IC-220/300/455/950 is with the suggested storage bin





la dolce vita










Scan the QR codes given below to download other catalogues for

- |   |                                       |  |
|---|---------------------------------------|--|
| 1 | Bakeries<br>Confectionery             | <br> |
| 2 | Commercial Kitchens<br>Cloud Kitchens |   |
| 3 | Cafés<br>Patisseries                  |   |
| 4 | Pizzerias<br>QSRs                     |   |
| 5 | Ice Cream Parlours<br>Juice Bars      |    |
| 6 | Resto-bars<br>Pubs                    |   |
| 7 | Food Retail<br>Supermarkets           |   |
| 8 | Food Preservation<br>Cold Storage     |   |

**P**  
**PUNE KITCHEN**  
QUALITY IS FAITH

B Side L, Pashupatinath Mandir, Near Jamma Masjid, Ayappa Mandir  
Road, Bhimrao Bhosle Chowk, Nehru Nagar, Pimpri, Pune – 411018  
Email: [unitedenterprises18@gmail.com](mailto:unitedenterprises18@gmail.com)  
Website: [www.punekitchen.com](http://www.punekitchen.com)  
Mobile: +91 9766641022  
GST: 27BIYPN1859G2ZJ







[www.punekitchen.com](http://www.punekitchen.com)