



## Equipment & Machinery For



Restaurant



Delivery Kitchen



Bakery



Cafe



Quick Service



Corporate Catering

**P**UNE\_KITCHEN<sup>TM</sup>  
QUALITY IS FAITH

## Pune Kitchen, Is All About Quality & Excellence

**PUNE KITCHEN** is a leading manufacturer of kitchen Equipment in Pune.

Our products consist of kitchen equipments, Kitchen Exhaust Systems, Kitchen Exhaust Hoods, 4 Door Vertical Refrigerator, Kitchen Exhaust Oil Filters, Commercial Kitchen Chimney, Kitchen Chimneys etc.

Founded in 2006 with a specific focus on forof kitchen equipments residential and commercial premises, Unitech enterprises has since grown into a national company having completed projects in all india. With a focus on continual improvement of products, management and service, unitech enterprises completes manufacturing in the company-owned facility in conformity with best standards .all of our products are produced with a strong emphasis on simplistic design, unitech enterprises invests strongly in product improvements and new development based heavily on feedback from the diverse customer base.

At united enterprises we are strongly committed to providing simple and effective solutions for families and businesses. Our team has an excellent reputation in the kitchen equipments and we pride ourselves on offering the best customer service available .We are very passionate about what we do, working hard to push the industry in a positive direction that your experience with united enterprises is a positive and enjoyable one.

We hope you find our website informative, and look forward to helping you become part of the solution. United enterprises also provide these products in customised form to our valued clients as per their requirements at industry leading prices. The quality controllers of our company help us by examining and testing all products on well defined parameters. We work hard for winning the utmost trust of the clients. Looking forward to serve you with our quality products.

Currently operating under the supervision of our mentor, Mr. Amir Ali MohiddinMulla. Driven by an intense desire to attain optimum customer satisfaction, he has implemented a client-centric approach in our company since its inception. Some of our trusted customers are Symbiosis College, Bharti Vidyapeeth & TATA Yazaki based in Pune.

### ARCHITECTURE



SAFETY



COMMUNITY



SUSTAINABILITY



BEST QUALITY



INTEGRITY



STRATEGY

## Our Vision :

Our Vision is to be recognized as a global leader in the equipment industry ,providing sustainable ,innovative and cost –effective solutions which will increase the value to every stakeholder.

## Our Mission :

Over a century later, we maintain our mark of quality, and continue to establish new standards in quality to protect our reputations across the world.Today our company offering Total Quality Assurance expertise, delivered consistently with precision, pace and passion, enabling our customers to power ahead safely.

## Quality Policy :

Pune Kitchen Equipment is dedicated to providing families and companies with solution systems that are affordable and meet the requirements of the market. Unitech enterprises products must be of excellent quality meeting relevant industry standards and be backed by a high level of customer service and competitive warranty support. Unitech enterprises as a company strives to play a leading role in the equipments industry, with a focus on continual improvement of products.

## Our Core Purpose :

“To enable the customer's growth with innovative solution for success maximization”

## OUR CORE VALUES



COMMITMENT



INNOVATIVE SOLUTION



RELATIONSHIP FOR LIFE



TEAMWORK

## Salient Features of Our Equipments :

- Excellent quality material offering high weather resistance to keep your food fresh & fungus free.
- A wide range of sizes available to serve any quantity of storage.
- Effective at preventing stains and also easy to clean.
- Can sustain heavy usage, thus last longer.
- Firmly assembled body to prevent loosening of parts.

DECK OVENS

PLANETARY MIXERS

SPIRAL MIXERS & BREAD SLICER

DOUGH SHEETERS & PROOFERS

SANDWICH GRILLERS & WAFFLE MAKERS

DEEP FAT FRYERS

PIZZA OVENS & SALAMANDER

GRIDDLE PLATE. TOASTER. ICE CRUSHER & INFRA LAMPS

MEAT MINCER. VEGETABLE CUTTER & SOUP KETTLE

DISPLAY SHOWCASE / CAKE DISPLAY

COFFEE MACHINES & GRINDER

JUICE DISPENSERS, SLUSH MACHINES & BLENDERS

CHEST FREEZERS / ICE CREAM FREEZERS

VISI COOLER | BOTTLE COOLER & WINE CHILLER

UNDER COUNTER REFRIGERATORS

COOLING SYSTEMS & WATER COOLERS

GAS BURNER RANGE / COOKING RANGE & TANDOOR

DOSA PLATE, GRIDDLE & COUNTERS

BAIN MARIE & G N PANS

COMBI OVENS

WORK TABLES

TABLES, STATIONS. SHELVES AND RACKS

SINKS. GREASE TRAPS & DRAIN COVER

DISH WASHING MACHINES

FOOD PREPARATION MACHINES

EXHAUST SYSTEM & FRESH AIR SYSTEM

MICROWAVE OVENS, RICE COOKER & WARMERS

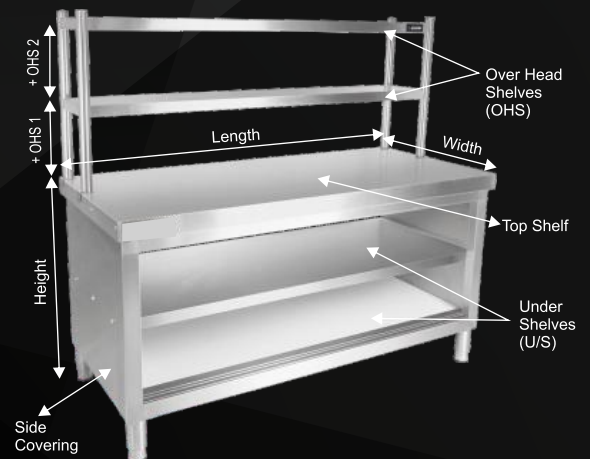
ICE CUBE MACHINES

INDUCTIONS, BARBEQUES AND SHAWARMA MACHINES

TROLLEYS & CARTS

## GUIDELINES FOR THIS CATALOG

- All product dimensions in the catalog are Length x Width x Height
- All product dimensions are either in Millimetres (mm) or Inches (") Conversion from millimetre to inch is shown as a round number to make it convenient.
- All images used in the catalog are actual product images, we have not used indicative images from the web.
- Some products may appear slightly different due to lighting and printing effects.
- We may change the design or the dimensions of any products for up gradation or betterment. .



## OV E 0101N

### NEW ELECTRIC OVEN SINGLE DECK ONE TRAY

- Dimensions: 35x22x15" • Tray Size: 16x24"
- Inner Chamber Size 24x16"
- Voltage: 220V (Single Phase) Power : 4.2 kw. Net Wt.: 35kg
- Separate temp. control for up and down Max Temp.: Up to 300°C
- WITH DIGITAL DISPLAY & MANUAL CONTROL



## OV E 0102N

### NEW ELECTRIC OVEN SINGLE DECK TWO TRAY

- Dimensions: 48x32x21" Tray Size: 16x24"
- Inner Chamber Size 34x24"
- Options available for 220V Single Phase & 380V Three Phase
- Power: 7Kw. Net Wt.: 80kg
- Separate temp. control for up and down. Max Tern.: Up to 400°C
- WITH COMPUTERIZED CONTROL AND TIMER

## OV E 0204N

### NEW ELECTRIC OVEN TWO DECK FOUR TRAY

- Dimensions: 48x32x50" • Tray Size: 16x24"
- Inner Chamber Size 34x24" • Voltage: 380v (Three Phase)
- Power: 14Kw. Net Weight: 170kg • Separate temp. control for all 4 heaters
- Maximum Temperature: Up to 400°C
- WITH COMPUTERIZED CONTROL AND TIMER



## OV G 0102N

### NEW GAS OVEN SINGLE DECK TWO TRAY

- Dimensions: 53x36x27". • Tray Size: 16x24"
- Inner Chamber Size 34x25". • Voltage: 220V (Single Phase)
- Power: 0.1Kw. Net Weight: 135kg • Separate temp. control for up and down
- Maximum Temperature: Up to 400°C
- WITH COMPUTERIZED CONTROL AND TIMER

## OV G 0204N

### NEW GAS OVEN TWO DECK FOUR TRAY

- Dimensions: 53x36x58". • Tray Size: 16x24".
- Inner Chamber Size 34x25". • Voltage: 220V (Single Phase)
- Power: 0.2Kw. Net Weight: 280kg. • With Digital Timer & Buzzer.
- Separate temp. control for all 4 Burners.
- Maximum Temperature: Up to 400°C
- WITH COMPUTERIZED CONTROL AND TIMER.



## OV G 0306N

### NEW GAS OVEN THREE DECK SIX TRAY

- Dimensions: 53x36x68". • Tray Size: 16x24"
- Inner Chamber Size 34x25" • Voltage: 220V (Single Phase)
- Power: 0.3Kw. Net Weight: 410kg. • With Digital Timer & Buzzer
- Separate temp control for all 6 Burners • Maximum Temperature: Up to 400°C
- WITH COMPUTERIZED CONTROL AND TIMER

**OV E 0101**

**ELECTRIC OVEN SINGLE DECK ONE TRAY**

- Dimensions: 35x22x15".
- Tray Size: 16x24"
- Inner Chamber Size 24x16".
- Voltage: 220V (Single Phase)
- Power: 4.2Kw. Net Wt.: 35kg
- Separate temperature control for up and down
- Maximum Temperature: Up to 300°C



**OV E 0102**

**ELECTRIC OVEN SINGLE DECK TWO TRAY**

- Dimensions : 48x32x21"
- Tray Size: 16x24"
- Inner Chamber Size 34x24"
- Available in Single Phase & Three Phase
- Power: 7Kw. Net Wt.: 80kg
- Separate temperature control for up & down
- Maximum Temperature: Up to 400°C

**OV G 0102**

**GAS OVEN SINGLE DECK TWO TRAY**

- Dimensions : 53x36x27"
- Tray Size: 16x24"
- Inner Chamber Size 34x25"
- Voltage: 220V (Single Phase)
- Power: 0.1Kw. Net Weight: 135kg
- Separate temperature control for up & down
- Maximum Temperature: Up to 400°C

**OV E 0204**

**ELECTRIC OVEN TWO DECK FOUR TRAY**

- Dimensions: 48x32x50"
- Tray Size: 16x24"
- Inner Chamber Size 34x24"
- Voltage: 380v (Three Phase)
- Power: 14Kw
- Net Weight : 170kg
- Separate temperature control for all 4 heaters
- Maximum Temperature: Up to 400°C

**OV G 0204**

**GAS OVEN TWO DECK FOUR TRAY**

- Dimensions: 53x36x58"
- Tray Size: 16x24"
- Inner Chamber Size 34x25"
- Voltage : 220V (Single Phase)
- Power : 0.2Kw. Net Weight: 280kg
- With Digital Timer & Buzzer
- Separate temperature control for all 4 Burners
- Maximum Temperature: Up to 400°C



**OV G 0306**

**GAS OVEN THREE DECK SIX TRAY**

- Dimensions: 53x36x68".
- Inner Chamber Size 34x25".
- Power: 0.3Kw. Net Weight: 410kg.
- Separate temperature control for all 6 Burners
- Maximum Temperature: Up to 400°C

- Tray Size: 16x24"
- Voltage: 220V (Single Phase)
- With Digital Timer & Buzzer

**OV G 0309**

**GAS OVEN THREE DECK NINE TRAY**

- Dimensions: 70x34x70".
- Inner Chamber Size 51x25".
- Power: 0.4 Kw. Weight: 550 kg. Appx.
- Separate temperature control for all 6 Burners
- Maximum Temperature: Up to 400°C
- Tray Size: 16x24"
- Voltage : 220V (Single Phase)
- With Digital Timer & Buzzer





**PL 07A**

**PLANETARY FOOD MIXER 7 LITRE Table Top**

- Bowl Volume: 7Litre. • Dimensions: 17x10x17"
- Voltage: 220V (Single Phase)
- Mixing Speed: Variable.
- Mixing Capacity : 1kg Cream, 0.5kg Flour.
- Power: 0.45Kw. Net Wt.: 29kg.



**PL 10A**

**PLANETARY FOOD MIXER 10 LITRE**

- Bowl Volume : 10Litre • Dimensions: 18x15x24"
- Voltage : 220V (Single Phase)
- Mixing Speed: 105/180/408.
- Mixing Capacity : 2kg Cream, 1kg Flour.
- Power: 0.5Kw. Net Wt.: 56kg.



All Planetary Mixers are provided with **Three Attachments**



**PL 20A**

**PLANETARY FOOD MIXER 20 LITRE**

- Bowl Volume : 20Litre.
- Dimensions : 21x18x33"
- Voltage : 220V (Single Phase)
- Mixing Speed : 105/180/408.
- Three Attachments.
- Mixing Capacity : 5kg Cream, 3kg Flour.
- Power: 0.75Kw. Net Wt. : 80kg.



**PL 30A**

**PLANETARY FOOD MIXER 30 LITRE**

- Bowl Volume : 30Litre.
- Dimensions : 22x20x37"
- Voltage : 220V (Single Phase)
- Mixing Speed : 110/200/420.
- Three Attachments.
- Mixing Capacity : 8kg Cream, 4.5kg Flour.
- Power: 1Kw. Net Wt. : 90kg.



**PL 40A**

**PLANETARY FOOD MIXER 40 LITRE**

- Bowl Volume: 40Litre.
- Dimensions: 25x25x40"
- Voltage: 220V (Single Phase)
- Mixing Speed: 80/160/288.
- Three Attachments.
- Mixing Capacity : 10kg Cream, 6kg Flour.
- Power: 1.1kw Net Wt. : 150kg.





**SP 20A**  
**SPIRAL DOUGH MIXER**  
**20 LITRE**

- Bowl Volume: 20 litre
- Kneading Capacity : 8 kg
- Dimensions: 28x15x30"
- Voltage : 220V
- Mixing Speed : 100/185rpm
- Bowl Speed : 10/16rpm
- Power : 0.5/0.75Kw
- Net Wt. : 80kg



**SP 30A**  
**SPIRAL DOUGH MIXER**  
**30 LITRE**

- Bowl Volume : 30 litre
- Kneading Capacity: 12 kg
- Dimensions: 31x18x33"
- Voltage : 220 V
- Mixing Speed : 100 / 185 rpm
- Bowl Speed : 10 / 16 rpm
- Power : 0.85/1.1Kw
- Net Wt.: 85kg

**SP 40A**  
**SPIRAL DOUGH MIXER**  
**40 LITRE**

- Bowl Volume : 40litre
- Kneading Capacity : 16 kg
- Voltage : 380V (Three Phase)
- Dimensions : 35x19x38"
- Power 1.1 / 2.2 Kw
- Mixing Speed : 100 / 185rpm
- Bowl Speed : 10 / 16rpm
- Net Wt. : 122 kg

**SP 50A**  
**SPIRAL DOUGH MIXER**  
**50 LITRE**

- Bowl Volume : 50 litre
- Kneading Capacity : 20 kg
- Voltage : 380V (Three Phase)
- Dimensions : 920x530x940mm
- Power : 1.1/2.2 Kw
- Mixing Speed : 100/185rpm
- Bowl Speed: 10/16rpm
- Net Wt. 128 kg



**BS 12 IMP**  
**IMPORTED BREAD SLICER**

- 12 MM TABLE TOP
- Dimensions : 22x20x24"
- No. of Blades : 32 Blades
- Voltage: 220V
- Power : 0.25 kw



**BS 12 IMP**  
**IMPORTED BREAD SLICER**

- 12 MM TABLE TOP
- Dimensions : 22x20x24"
- No. of Blades : 32 Blades
- Voltage: 220V
- Power : 0.25 kw





## DS 520 SS

### DOUGH SHEETER 520

- FULL STAINLESS STEEL BODY & ROLLER
- Belt Size : 520mm (21x87in)
- Dimensions : 36x106x44"
- Voltage : 220V 50Hz
- Power : 0.55KW
- Max. Dough Capacity : 5.5kg
- Roller Gap : 1mm to 40mm
- Net Weight : 248kg



## DS 650 SS

### DOUGH SHEETER 650

- FULL STAINLESS STEEL BODY & ROLLER
- Belt Size: 650mm ( 26x87inch)
- Dimensions: 40x106x44"
- Voltage: 220V 50Hz
- Power: 0.55KW
- Max. Dough Capacity : 7.5kg
- Roller Gap : 1mm to 40mm
- Net Weight: 265kg



## PR SD

### ELECTRIC PROOFER SINGLE DOOR

- Default Capacity : 8 Trays (extendable)
- Tray Size : 16x24"
- Dimensions : 27x19x76"
- Voltage: 220V. 50Hz
- Power : 2.1KW. Net Weight : 32kg

## PR DD

### ELECTRIC PROOFER TWO DOOR

- Default Capacity : 16 Trays (extendable)
- Tray Size: 16x24"
- Dimensions: 40x27x76"
- Voltage: 220V. 50Hz
- Power: 2.8KW. Net Weight : 50kg





**SG REG SIN**  
**SANDWICH GRILLER SINGLE**

- Dimensions : 13x15x7"
- Power : 1.8Kw.
- Upper Grill Size : 8.25 x 8.5"
- Lower Grill Size : 9.5 x 9.25"
- Temperature Range : 50 - 300°C



**SG JUM SIN**  
**SANDWICH GRILLER JUMBO**

- Dimensions : 16x15x9"
- Power : 2.2Kw.
- Upper Grill Size : 13.5 x 8.5"
- Lower Grill Size : 14 x 11"
- Temperature Range : 50-300°C



**SG JUM DBL**  
**SANDWICH GRILLER JUMBO DOUBLE**

- Dimensions : 34X16X8"
- Power 2.2+2.2Kw.
- Upper Grill Size : 13.5X8.5"X 2
- Lower Grill Size : 30X11"
- Temperature Range : 50-300°C



**WB CONE**  
**CONE BAKER**

- Dimensions : 14x10x9"
- Power : 1Kw.
- Voltage : 220V Single Phase.
- Weight: 5.4kg. WITH TIMER.



**WB R**  
**WAFFLE BAKER ROUND**

- Dimensions: 14x10x9"
- Power: 1Kw.
- Voltage: 220V Single Phase.
- Weight: 5 4kg. WITH TIMER.



**WB R ROT**  
**ROTARY WAFFLE BAKER ROUND**

- Dimensions : 14x16x10"
- Power: 1 2Kw.
- Voltage: 220V Single Phase.
- Weight: 6.3kg. WITH TIMER.



**WB MPC**  
**MINI PAN CAKE BAKER**

- Dimensions: 13x12x7"
- Power: 0.85 Kw.
- Voltage: 220V Single Phase.
- Temperature: 50-300°C.



**WB S**  
**WAFFLE BAKER SQUARE**

- Dimensions : 12x15x10"
- Power : 1.6Kw.
- Voltage : 220V Single Phase.
- Weight : 11.6kg. WITH TIMER.



**ALL OTHER TYPE OF**  
**WAFFLE MAKERS ALSO AVAILABLE**



**FR 4 / FR 6**  
**ELECTRIC DEEP FRYER SINGLE**

- Capacity: 4 / 6 LITRE
- Dimensions: 8x15x12" / 10x17x11"
- Power: 1.8Kw / 2Kw
- Temperature Range: Up to 190°C
- Removable SS Pan & Body for easy wash



**FR ECO 8**  
**ELECTRIC DEEP FRYER SINGLE**

- Capacity: 8 LITRE
- Dimensions: 11x18x12"
- Power: 2.5Kw
- Temperature Range: Up to 190°C
- Removable SS Pan & Body for easy wash



**FR 10/FR 19**  
**ELECTRIC DEEP FRYER WITH TAP**

- Capacity: 10/19 LITRE
- Dimensions : 11x19.5x1.4" 14x21x16"
- Power: 3Kw / 5Kw
- Temperature Range: Up to 190°C
- Remove Heater & SS Body for easy wash



**FR GAS 18A**  
**AUTOMATIC GAS FRYER WITH TAP**

- Capacity: 18 LITRE
- Dimensions: 13x18x25"
- Temperature Range: Up to 190°C
- Removable Pan & SS Body for easy wash
- AUTOMATIC TEMPERATURE CONTROL



**FR D 44 / FR D 66**  
**ELECTRIC DEEP FRYER DOUBLE**

- Capacity: 4+4 / 6+6 LITRE
- Dimensions : 17x15x12\* / 17x17.5x13"
- Power 1.8 + 1.8 Kw / 2+2 Kw.
- Temperature Range: Up to 190°C
- Removable Pan & SS Body for easy wash



**FR ECO D 88**  
**ELECTRIC DEEP FRYER DOUBLE**

- Capacity: 8+8 LITRE
- Dimensions: 17x18x13"
- Power 2.5+2.5Kw
- Temperature Range: Up to 190°C
- Removable Pan & SS Body for easy wash

## OTHER BRAND DEEP FRYERS & PRESSURE FRYERS



**Frymaster**



**Dean**



**PITCO**





- PO Ss1**  
**ELECTRIC PIZZA OVEN STONE BASE**
- SINGLE DOOR : SINGLE LAYER
  - FULL STEEL BODY
  - Outer Dimensions: 22x22x12"
  - Stone Size: 16x16" (1 stone)
  - Temperature: 0-350°C. • Power 2Kw
  - Capacity: 8 inch (20cm) Pizza X 4pcs



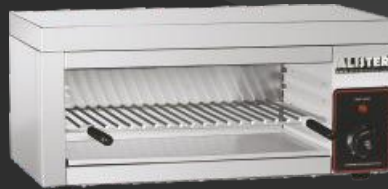
- PO Ss2**  
**ELECTRIC PIZZA OVEN STONE BASE**
- TWO DOOR: TWO LAYERS
  - FULL STEEL BODY
  - Outer Dimensions: 22x22x18"
  - Stone Size: 16x16" (2 stones)
  - Temperature: 0-350°C. • Power 3Kw
  - Capacity: 8inch (20cm) Pizza X 8pcs



- PO Ep218**  
**ELECTRIC PIZZA OVEN STONE BASE**
- TWO DOOR: TWO LAYERS
  - Outer Dimensions: 27x27x17"
  - Stone Size: 19x19" (2 stones)
  - Temperature: 0-350°C • Power 3Kw
  - Capacity: 18inch (60cm) Pizza X 2pcs



- PO H24**  
**SUPERSTAR ELECTRIC PIZZA OVEN**  
**STONE BASE**
- SINGLE DOOR SINGLE LAYER**
- Outer Dimensions: 36x32x17"
  - Stone Size: 24x24" (1 stone)
  - Temperature: 0-350°C.
  - Power: 4.4Kw
  - Cap: 12inch (30cm) Pizza X 4pcs



- ES**  
**ELECTRIC SALAMANDER**  
**WALL MOUNTING Dim : 24x12x11"**
- Wall Hanging Model
- Power: 2Kw
  - Weight: 10.8kg
  - Full SS Body





**EGP 818**  
**ELECTRIC GRIDDLE PLATE SMALL**  
 • Dimension : 22x18.5x9"  
 • Power : 3Kw. Plate : 8mm  
 • Temperature Range : 50 to 300°C



**EGP 820**  
**ELECTRIC GRIDDLE PLATE BIG**  
 • Dimension: 29x20x9"  
 • Power: 4Kw. Plate: 8mm  
 • Temperature Range: 50 to 300°C



**EGP 821**  
**ELECTRIC GRIDDLE PLATE HALF GROOVED**  
 • Dimension: 29x20x9"  
 • Power: 4Kw. Plate: 8mm  
 • Temperature Range: 50 to 300°C



**GGP 821 HG**  
**GAS GRIDDLE PLATE HALF GROOVED**  
 • Dimension : 29x21x17"  
 • Power : 35.BTU/HR. Plate: 8mm  
 • Temperature Range : 50 to 300°C



**SOUP 10**  
**ELECTRIC SOUP KETTLE**  
 • Type : Electric • Capacity : 10 Litre  
 • Power : 400W



**IL 1**  
**INFRARED LAMP / HEATING LAMP**  
 • For Food Pick-up & For Food Focus  
 • Power: 250W. • Diameter: 175mm  
 • Adjustable Height: 0.6 ~ 1.8-mtr



**TST POP4**  
**POP UP TOASTER 4 SLICE**  
 • Dimensions: 14x8x9" • Power: 2.24Kw



**TST POP6**  
**POP UP TOASTER 6 SLICE**  
 • Dimensions: 18x8x9" • Power: 3.24KW



**TST CON150**  
**CONVEYOR TOASTER**  
 • Dimensions: 22x14x16" • Power: 1.5kw  
 • Capacity: 150 Slices per hour



**MM 08**  
**MEAT MINCER MACHINE SS304**  
 • Mincing Capacity: 75kg/Hour  
 • Dimensions: 335x175x325mm  
 • Speed: 175rpm. • Power: 250W



**MM 12**  
**MEAT MINCER MACHINE SS304**  
 • Mincing Capacity: 150kg/Hour  
 • Dimensions: 15x10x17mm  
 • Speed: 170/200rpm. • Power: 750W



**MM 22**  
**MEAT MINCER MACHINE SS304**  
 • Mincing Capacity: 250kg/Hour  
 • Dimensions: 440x270x385mm  
 • Speed: 180/218rpm. • Power: 850W



**VCM 01**  
**VEGETABLE CUTTING MACHINE WITH 5 BLADES**  
 • Dimensions: 26x13x21"  
 • Power: 1HP/0.75KW



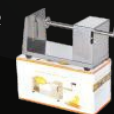
**IC 1**  
**ICE CRUSHER**  
 • Power: 320W • Speed: 1400 rpm  
 • Shaving Capacity: 198 lbs / hr



**FF CUTTER 1**  
**FRENCH FRIES CUTTER TABLE MOUNT**



**FF CUTTER 2**  
**FRENCH FRIES CUTTER WALL MOUNT**



**TPC**  
**TORNADO POTATO CUTTER**



AVAILABLE IN  
3 SHELVES + BASE

DIS SQR 1200 / 1500  
REFRIGERATED CAKE DISPLAY SHOWCASE  
STRAIGHT GLASS - 4FT / 5FT

- Dimensions: 48x27x48" / 60x27x48"
- 3 Shelves + Base. Korean Marble
- Vacuum Sandwich Insulated Glass
- Power: 760Watt. • Single Phase 220V
- Temperature Range: 4-8°C
- Cooling: Air (Ventilated) Cooling. Refrigerant R134A



DIS RND 1200 / 1500  
REFRIGERATED CAKE DISPLAY SHOWCASE  
ROUND GLASS - 4FT / 5FT

- Dimensions: 48x28x49" / 60x28x49"
- 3 Shelves + Base. Korean Marble
- Vacuum Sandwich Insulated Glass
- Power: 760Watt. • Single Phase 220V
- Temperature Range: 4-8°C
- Cooling: Air (Ventilated) Cooling. Refrigerant R134A



DIS TT1  
PASTRY DISPLAY SHOWCASE  
TABLE TOP

- Dimensions : 34x20x31"
- 1 Shelf + Base
- Toughened Glass
- Power : 320Watt
- Temperature Range : 4~8°C
- Cooling : Air (Ventilated) Cooling



DIS SUSHI 5  
REFRIGERATED  
SUSHI DISPLAY

- Dimensions : 54X17X13"
- Power : 135Watt
- Capacity : 52 Ltr
- Temperature Range : 2-12°C
- GN Pan : 5pc of size 1/3

ROTATE YOUR  
CAKES IN STYLE



DIS ROTATE  
REFRIGERATED ROTATING  
CAKE DISPLAY

- Dimensions: 18X18X41"
- With LED Lights
- Power: 450Watt
- Capacity: 72Ltr
- Temperature Range: 2-10°C





- CM EB 1G**  
**EXPOBAR COFFEE MACHINE**  
**SINGLE GROUP SEMI AUTOMATIC**
- Model: New Elegance Mini
  - Boiler Capacity: 6 Ltr
  - Power: 2700W
  - Dimensions: 490x510x580mm



- CM EB 2G**  
**EXPOBAR COFFEE MACHINE**  
**TWO GROUP - SEMI AUTOMATIC**
- Model: New Elegance Mini
  - Boiler Capacity: 6 Ltr
  - Power: 2700W
  - Dimensions: 490x510x580mm



- CG MARFIL**  
**MARFIL COFFEE GRINDER**
- Hopper Capacity : 2 kg Beans
  - Dispenser Capacity : 600gm
  - Power : 356W
  - Dimensions : 210x600x380mm



- CM LC 1G A1**  
**LA CIMBALI COFFEE MACHINE**  
**SINGLE GROUP - SEMI AUTOMATIC**
- Boiler Capacity: 5 Ltr
  - Power: 2800-3300W
  - Dimensions: 432x528x570mm



- CM LC 2G A2**  
**LA CIMBALI COFFEE MACHINE**  
**TWO GROUP - SEMI AUTOMATIC**
- Boiler Capacity: 10.5 Ltr
  - Power: 2800-3300W
  - Dimensions: 712x528x570mm



- CG MAGNUM**  
**LA CIMBALI ON DEMAND**  
**COFFEE - GRINDER/DOSER**
- Model: MAGNUM ON DEMAND
  - Hopper Capacity: 1.6 kg Beans
  - Power: 300W
  - Dimensions: 220x400x620mm



- AUTOCAF 717**  
**AUTOMATIC CAPPUCCINO MACHINE**
- Dimensions : 422x280x380mm
  - Adjustable Coffee Spout : 80 to 140mm
  - Adjustable Coffee Qty : 20ml to 250ml
  - Adjustable Coffee Temp. : 70 to 90 °C
  - Bean Container Capacity : 300g
  - Dreg Drawer Capacity : 15pc
  - Water Tank Capacity : 2.0 Ltr
  - Touch Screen Operations
  - Power : 1250-1450 Watt



- AUTOCAF 715**  
**AUTOMATIC EXPRESSO MACHINE**
- Dimensions: 422x280x380mm
  - Adjustable Coffee Spout: 70 to 110mm
  - Adjustable Coffee Qty: 20ml to 250ml
  - Adjustable Coffee Temp.: 75 to 90 °C
  - Bean Container Capacity: 300g
  - Dreg Drawer Capacity: 15pc
  - Water Tank Capacity: 2.0 Ltr
  - Touch Screen Operations
  - Power: 1250-1450 Watt



**JD 9L 1**  
**JUICE DISPENSER**  
**REFRIGERATED SINGLE JAR**

- Single Jar: Capacity: 9 Ltr
- Dimensions: 210x390x670mm
- Voltage: 220V (Single Phase)
- Power: 180Watt
- Temperature Range : 7°C ~12°C



**JD 9L 2**  
**JUICE DISPENSER**  
**REFRIGERATED TWO JAR**

- Two Jar : Capacity: 9 + 9 Ltr
- Dim 330x390x670mm
- Voltage: 220V (Single Phase)
- Power: 280Watt
- Temperature Range : 7°C ~12°C



**JD 9L 3**  
**JUICE DISPENSER**  
**REFRIGERATED THREE JAR**

- Three Jar : Capacity: 9 + 9 + 9 Ltr
- Dimensions : 410x390x670mm
- Voltage : 220V (Single Phase)
- Power : 280Watt
- Temperature Range : 7°C ~ 12°C



**SM 10L 2**  
**SLUSH MACHINE**  
**REFRIGERATED TWO JAR**

- Two Jar : Capacity : 10 + 10 Ltr
- Dimensions : 420x560x760mm
- Voltage : 220V (Single Phase)
- Power : 400Watt
- Temperature Range : -2°C~3°C



**HCD 10L**  
**HOT CHOCOLATE**  
**DISPENSER**

- Capacity : 10 Ltr
- Dimensions : 400x320x570mm
- Voltage : 220V (Single Phase)
- Digital Temperature Controller
- Power : 450Watt
- Temperature Range : 30°C ~ 90°C



**HWD 10L**  
**HOT WATER DISPENSER**

- Capacity : 10 Ltr
- Full SS 316 Interior Body & Tubes
- Water Flow : 35 Ltr per Hour
- Voltage : 220V (Single Phase)
- Power : 2Kw
- Temperature Range : 30°C ~ 90°C



**MB 12**  
**MILK BOILER**

- Capacity: 12 Litre
- Body : Stainless Steel 304
- Provided : Temperature Controller Power Indicators
- Milk Faucet & Water Faucet



**CVM 2**  
**TEA / COFFEE VENDING M/C**

- Type : 2 Lane For Premix Powder
- Dispensing Rate : 4 cups per min
- Dimensions : 13x14x18"
- Power : 2Kw



**BLR**  
**PUNE KITCHEN BLENDER**

- Dimensions: 10x12x17"
- Jar: 2Ltr. Power: 1200W
- Variable Speed
- High Performance
- All spares available



**BL ADV**  
**PUNE KITCHEN BLENDER ADVANCE**

- Dimensions: 8x10x20"
- Jar: 2Ltr. • Power: 1800W
- Variable Speed
- High Performance. With Timer
- All spares available



**BLS**  
**PUNE KITCHEN SILENT BLENDER**

- Dimensions: 9x9x18" LCD Display
- Power: 1600W
- Variable Speed
- High Performance.
- With Timer
- With Soundproof Cabinet







## Hard Top Chest Freezers

Hard Top Chest Freezers Available in Sizes 100 Ltrs up to 750 Ltrs



## Flat Glass Top Chest Freezers

Flat Glass Top Chest Freezers Available in sizes 100 Ltrs Up To 60 Ltrs



## Curved Glass Top Chest Freezers

Curved Glass Top Chest Freezers Available In  
Sizes 200 Ltrs Up To 500 Ltrs

Also Available with canopy



**GLASS DOOR VISI COOLERS / BOTTLE COOLERS**  
VISI COOLERS AVAILABLE IN SIZES 100 LTRS UP TO 1500 LTRS



Used For Ice Cream  
& Frozen Food Display

**GLASS DOOR VISI FREEZERS**  
AVAILABLE IN SIZES  
200 LTRS UP TO 1500 LTRS



**WINE COOLERS**  
AVAILABLE IN SIZES 25 LTRS, 45 LTRS & 185 LTRS



**BB 2D SS / BB 2D BL**  
**BACK BAR REFRIGERATOR 2 DOOR**  
• Dimensions: 35x21x34"  
• Stainless Steel Body / Black Powder Coated Body  
• Digital Temperature Controller  
• Temperature Range: 0~10°C



**BB 3D SS / BB 3D BL**  
**BACK BAR REFRIGERATOR 3 DOOR**  
• Dimensions: 54x21x 34"  
• Stainless Steel Body / Black Powder Coate Body  
• Digital Temperature Controller  
• Temperature Range: 0~10°C



**UCC 1200A**  
**SS UNDER-COUNTER**  
**REFRIGERATOR 4 FT**

- Dimensions: 48x30x32"
- Embraco / Emerson Compressor
- Digital Temperature Controller
- Cooling Type: Static Cooling
- Temperature Range: 0 to 10°C



**UCC 1500A**  
**SS UNDER-COUNTER**  
**REFRIGERATOR 5 FT**

- Dimensions: 60x30x32"
- Embraco / Emerson Compressor
- Digital Temperature Controller
- Cooling Type: Static Cooling
- Temperature Range: 0 to 10°C



**UCC 1800A**  
**SS UNDER-COUNTER**  
**REFRIGERATOR 6 FT**

- Dimensions: Inches: 72x30x32"
- Embraco / Emerson Compressor
- Digital Temperature Controller
- Cooling Type: Static Cooling
- Temperature Range: 0 to 10°C

**UCF 1500A**  
**SS UNDER-COUNTER FREEZER 5 FT**

- Dimensions: 60x30x32"
- Embraco / Emerson Compressor
- Digital Temperature Controller
- Cooling Type: Static Cooling
- Temperature Range: -5 to -15 C

- Rounded Internal Edges
- Removable Gaskets
- Self Closing Doors
- Auto Defrost
- Eco Friendly Refrigerant
- Food Grade Steel
- Uniform Cooling
- Adjustable Trays

Also Available With  
 Over - Head Shelves



**"Under-Counter Refrigerators are essential additions to your Restaurant"**

We also have different models with doors, drawers, or combinations of both to store ingredients of all sizes and shapes.



**CBM PSS 200 CEL / CBM PSS 300**  
**PREP COUNTER / COLD BAIN MARIE**  
**TWO DOOR**

- Temperature Range: 2 To 8°C
- Capacity: 5 x 1/6 Gn Pans / 8 x 1/6 Gn Pans
- Dimensions: 900x700x1000mm / 1368x700x1000mm
- Volume: 240 Ltr / 360 Ltr
- Input Power for Chiller: 335Watt / 495Watt
- Refrigerant: R134a. Shelves: 2
- Digital Temperature Controller
- Cooling Type: Ventilated Cooling

**CBM 1800 SS**  
**PREP COUNTER / COLD BAIN MARIE**  
**THREE DOOR**

- Temperature Range: 2 to 8°C
- Dimensions: 72x28x32+6"
- Digital Temperature Controller
- Cooling Type: Ventilated Cooling

**REACH - IN REFRIGERATORS**



**TWO DOOR  
VERTICAL CHILLER  
STATIC MODEL**  
 · TEMP RANGE: 2 to 8°C  
 · Dimensions: 750x750x2010mm  
 · Inches approx.: 30x30x80"  
 · Volume: 500 Ltr

**TWO DOOR  
VERTICAL CHILLER / FREEZER  
VENTILATED MODEL**  
 · TEMP RANGE: 2 to 8°C / -18 to -22°C  
 · Dimensions: 740x830x2010mm  
 · Inches approx.: 30x33x80"  
 · Volume: 650 Ltr



**FOUR DOOR  
VERTICAL CHILLER/ FREEZER  
STATIC MODEL**  
 · TEMP RANGE: 2 to 8°C / -5 to -15°C  
 · Dimensions: 1200x750x2010mm  
 · Inches approx.: 48x30x80"  
 · Volume: 1050 Ltr

**FOUR DOOR  
VERTICAL CHILLER/ FREEZER  
VENTILATED MODEL**  
 TEMP RANGE: 2 to 8°C / -18 to -22°C  
 Dimensions: 1480x830x2010mm  
 Inches approx.: 59x33x80"  
 Volume: 1300 Ltr

**COLD ROOMS**



**COLD ROOM CAN BE MADE IN VARIOUS SIZES & TYPES.**

**WATER COOLERS**



**REFRIGERATED WATER COOLER**

WATER COOLERS ARE AVAILABLE IN SIZES: 20, 40, 60, 80, 100, 150, 200, 300, & 450 LTRS



**GB 1 BULK  
SINGLE BURNER  
GAS RANGE FOR  
BULK COOKING**

- Dimensions: 24x24x15"
- Branded Burner and Fittings
- CI Pan Supports
- SS Thickness: 16 & 18swg



**Gb1  
SINGLE BURNER  
GAS RANGE  
WITH SPLASH-BACK**

- Dimensions: 24x24x32+6"
- With 1 Under-Shelf
- With Splash-Back
- Branded Burner and Fittings
- CI Pan Supports. SS Drip Tray
- SS Thickness: 16 & 18swg



**Gb2  
TWO BURNER  
GAS RANGE  
WITH SPLASH-BACK**

- Dimensions: 45x24x32+6"
- With 1 Under-Shelf
- With Splash-Back
- Branded Burner and Fittings
- CI Pan Supports. SS Drip Tray
- SS Thickness: 16 & 18swg



**Gb3  
THREE BURNER  
GAS RANGE  
WITH SPLASH-BACK**

- Dimensions: 66x24x32+6"
- With 1 Under-Shelf
- With Splash-Back
- Branded Burner and Fittings
- CI Pan Supports. SS Drip Tray
- SS Thickness: 16 & 18swg



**Gb4  
FOUR BURNER  
GAS RANGE  
WITH SPLASH-BACK**

- Dimensions: 32x32x32+6"
- With 1 Under-Shelf
- With Splash-Back.
- Branded Burner and Fittings
- CI Pan Supports. SS Drip Tray
- SS Thickness: 16 & 18swg



**Gb6  
SIX BURNER  
GAS RANGE  
WITH SPLASH-BACK**

- Dimensions: 48x32x32+6"
- With 1 Under-Shelf
- With Splash-Back
- Branded Burner and Fittings
- CI Pan Supports. SS Drip Tray
- SS Thickness: 16 & 18swg



**GBC1  
SINGLE BURNER  
CHINESE GAS RANGE  
WITH 15" SPLASH-BACK**

- Dimensions: 28x28x30+15"
- 1 Under-Shelf
- With High Splash-Back
- Branded Burner and Fittings
- CI Pan Supports. SS Drip Tray
- SS Thickness: 16 & 18swg



**GBC2  
TWO BURNER  
CHINESE GAS RANGE  
WITH 15" SPLASH-BACK**

- Dimensions: 48x28x30+15"
- 1 Under-Shelf
- With High Splash-Back
- Branded Burner and Fittings
- CI Pan Supports. SS Drip Tray
- SS Thickness: 16 & 18swg



**GBC2+1 TWO + ONE BURNER  
CHINESE GAS RANGE  
WITH 15" SPLASH-BACK**

- Dimensions: 54x30x30+15"
- 1 Under-Shelf
- With High Splash-Back
- Branded Burner and Fittings
- CI Pan Supports. SS Drip Tray
- SS Thickness: 16 & 18swg



**TAN SQ 36  
SS TANDOOR  
INSULATED SQUARE**

- Dimensions: 36x36x40"
- Granite/SS Top
- With Heat Insulation
- With Heavy duty wheels
- Wooden Paneling Optional



Also Available  
With Chapati Puffer

DB G TT  
TABLE TOP GAS DOSA BHATTI  
WITH 3 SIDE SKIRTING  
• Dimensions: 27x18x15+2"  
• 10mm MS Plate on top



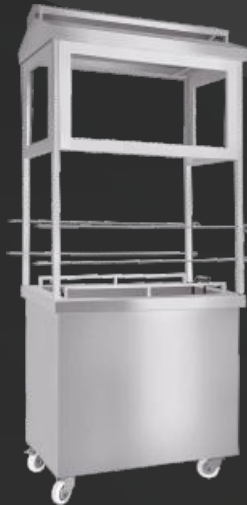
DB G 36 / DB G 48  
GAS DOSA BHATTI - 3 FT / 4 FT  
WITH 3 SIDE SKIRTING  
WITH 1 UNDER SHELF  
• Dimensions: 36x24x32+3" / 48x24x32+3"  
• 10mm MS Plate on top.



GP G PL  
GAS GRIDDLE PLATE  
WITH 3 SIDE SKIRTING  
WITH 1 UNDER SHELF  
• Dimensions: 32x32x32+3"  
• 10mm MS Plate on top.



LRG 36  
LAVA ROCK GRILL  
WITH SS PIPE STAND  
WITH 3 SIDE SKIRTING  
WITH 1 UNDER SHELF  
• Dimensions: 36x30x34+4"  
• Double Jali on Top



BARBEQUE  
COUNTER



PANI PURI  
COUNTER



PAV BHAJI  
COUNTER





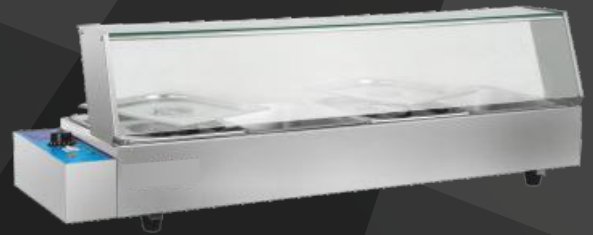
**BM 1200 SS / BM 1500 SS  
BAIN MARIE FLOOR MODEL**

- Dimensions: 48x28x32" / 60x28x32"
- 1 Under-Shelf.
- Tank Capacity:  
3/4 GN Pans Of Size 1/1 (150mm)



**BM GL 1500 / BM GL 1800  
SERVICE BAIN MARIE  
WITH SNEEZE GUARD**

- Dimensions:  
60x28+10x50" / 72x28+10x50"
- Glass Sneeze Guard Provided
- Tray Rail Provided
- Tank Capacity:  
4/5 GN Pans Of Size 1/1 (150mm)



**BM TT 4  
ELECTRIC BAIN MARIE TABLE TOP**

- Dimensions: 28x23x9"
- Capacity: 4 GN PANS 1/2 (100mm)
- 6 litre each. • Power: 1.5kw

**BM TT 6  
ELECTRIC BAIN MARIE TABLE TOP**

- Dimensions: 28x26x12"
- Capacity: 6 GN PANS OF 1/3 (150mm)
- 5.4 litre each. • Power: 1.5kw

**BM TT GL 3 / BM TT GL 4  
ELECTRIC BAIN MARIE  
WITH GLASS TABLE TOP**

- Dimensions: 36x14x12" / 47x14x12"
- Capacity: 3/4 GN PANS OF 1/2 (100mm)
- 6 litre each. • Power: 1.5kw / 1.8kw

## GN PANS AVAILABLE IN ALL SIZES



Gastonorm pans (GN Pans) are the perfect, versatile food storage system for any commercial kitchen. Gastonorm container sizes have been standardised for the catering industry, making it easy to find the exact pan for your needs.

Also compatible  
with Baking Tray  
400x600mm



**WHIRLPOOL OVEN AFO 607**

- Capacity: 5 GN Pans of size 2/3 (440x345mm)
- Convection and combi direct steam oven
- Perfect for catering and pastry
- Electronic control with digital display
- 3 cooking phases Auto reversing fan
- Manual humidity control
- 75 mm height between shelves



**WHIRLPOOL OVEN AFO 605**

- Capacity: 5 GN Pans of size 1/1
- Convection and combi direct steam oven
- Perfect for catering and pastry
- Electronic control with digital display
- 3 cooking phases Auto reversing fan
- Manual humidity control
- 75 mm height between shelves



**HOUNO COMBI OVEN KPE 1.06E**

- Capacity: 6 GN Pans of size 1/1
- Smart Digital Control with inbuilt programmes
- Dimensions: 899x831x795mm
- Water connection (pressure hose): 3/4"/d 1/2"
- Electric Operated
- Connected load: 9KW



**RATIONAL COMBI OVEN CMP-61E**

- Capacity: 6 GN Pans of size 1/1
- Manual Control
- Adjustable Steam & Temperature
- Dimensions: 845x770x782mm
- Water connection (pressure hose): 3/4"/d 1/2"
- Electric Operated
- Connected load: 11Kw



**RATIONAL COMBI OVEN SCC-61E**

- Capacity: 6 GN Pans of size 1/1
- Smart Digital Control with inbuilt programmes
- Can insert external recipes through Pen drive
- Dimensions: 845x770x782mm
- Water connection (pressure hose): 3/4"/d 1/2"
- Electric Operated
- Connected load: 11 kw



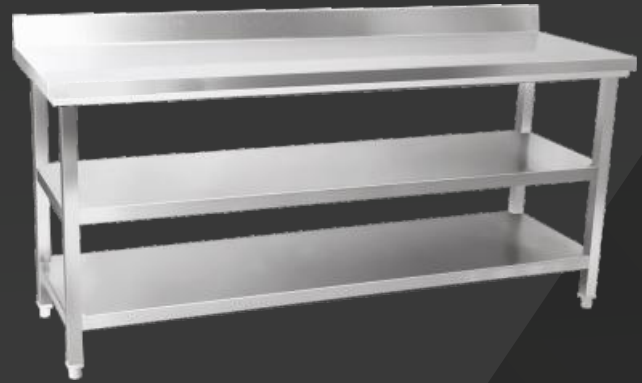
**COS COMBI OVEN STAND**

- Dimensions: 880x780x800mm
- Inches: 35x31x32"
- Arrangement for GN Pans storage
- SS Thickness: Top 16swg & 18swg

**We Have The Widest Range Of Combi Ovens Available**







**WORK TABLE WITH 2 UNDER SHELVES  
WITH SPLASH - BACK**

Model	WT SB 600 SS	WT SB 900 SS	WT SB 1200 SS	WT SB 1500 SS	WT SB 1800 SS
Dimensions	600x600x850+100mm	900x600x850+100mm	1200x600x850+100mm	1500x600x850+100mm	1800x600x850+100mm
Inches (Approx.)	24x24x33+4"	36x24x33+4"	48x24x33+4"	60x24x33+4"	72x24x33+4"

\*We have mentioned standard dimensions. We also make custom made sizes as per client's requirements.



**WORK TABLE WITH 2 UNDER SHELVES**

Model	WT 600 SS	WT 900 SS	WT 1200 SS	WT 1500 SS	WT 1800 SS
Dimensions	600x600x850mm	900x600x850mm	1200x600x850mm	1500x600x850mm	1800x600x850mm
Inches (Approx.)	24x24x33"	36x24x33"	48x24x33"	60x24x33"	72x24x33"

\*We have mentioned standard dimensions. We also make custom made sizes as per client's requirements.



**CWT 1500 SS  
CABINET STYLE WORK TABLE**  
 • Dimensions: 1500x750x800mm  
 • Inches: 60x30x32"  
 • 3 side covered,  
 • Front Sliding Door.



**WS 1500  
WORK STATION WITH BIN**  
 Dimensions: 59x27x32+4"  
 Work Table with Sink.  
 With Chopping Board.  
 With Perforated Top with Drain below  
 With Garbage Chute.  
 With SS Bin & 2 Flexible Faucets



**PICK-UP TABLE / SERVICE TABLE  
WITH 2 UNDER SHELVES &  
2 OVER HEAD SHELVES**



**TWIN OVER-HEAD SHELF**

<b>OHS 900 SS</b> 36x12x30"	<b>OHS1200</b> 48x12x30"	<b>OHS 1800</b> 72x12x30"
--------------------------------	-----------------------------	------------------------------



**WALL SHELF**

<b>WS 600</b> 600x300mm 24x12"	<b>WS 900</b> 900x300mm 36x12"	<b>WS 1200</b> 1200x300mm 48x12"	<b>WS 1500</b> 1500x300mm 60x12"	<b>WS 1800</b> 1800x300mm 72x12"
--------------------------------------	--------------------------------------	----------------------------------------	----------------------------------------	----------------------------------------



**CS 900  
COCKTAIL STATION & LIQUOR RAIL**  
 • Dimensions: 35x24+4+4x32+4"  
 • Insulated Tank with  
 • Removable Three Partitions  
 • Perforated Base  
 • Removable Insulated Lid



**DB 600  
DRAIN BOARD & LIQUOR RAIL**  
 • Dimensions: 24x24+4x32+4"  
 • Removable Perforated Inverted Tray Top  
 • Tray type Base for storing spillage  
 • Separate arrangement for drain out



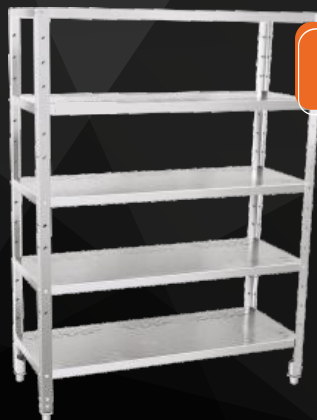
**WALL SHELF FOLDABLE**  
 WSF 900 / 1200  
 900x300mm / 1200x300mm  
 36x12" / 48x12"



**WALL SHELF FOR OVENS**



**RAC STO 1200 / RAC STO 1500  
SS STORAGE RACK**  
 • Dimensions: 1200x500x1800mm / 1500x500x1800mm  
 • Inches: 48x20x72" / 60x20x72"  
 • Five Shelves



**SPECIALLY DESIGNED  
PERFORATED ANGLE  
ADJUSTABLE RACK**



**RAC POT 1200 / RAC POT 1500  
SS POT RACK**  
 • Dimensions: 1200x500x1550mm / 1500x500x1550mm  
 • Inches: 48x20x62" / 60x20x62"  
 • Four Shelves.



**DLT 1200 / DLT 1450**  
**DISH LANDING TABLE**  
 1200x600x850+100mm / 1450x600x850+100mm  
 48x24x34+4" / 58x24x34+4"



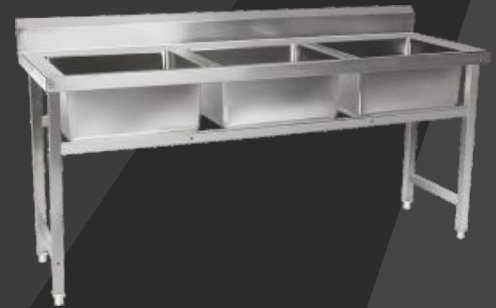
**DLT DEEP**  
**DEEP DISH LANDING TABLE**  
 Dimensions: 1500x750x850mm  
 Inches: 60x30x34"



**SINK1**  
**SINGLE SINK UNIT WITH SPLASH-BACK**  
 • Dimensions: 600x600x850+150mm  
 • Inches: 24x24x34+6"  
 • Bowl Size: 17.5x16x9.5"(deep)



**SINK2**  
**TWO SINK UNIT WITH SPLASH-BACK**  
 Dimensions: 1200x600x850+150mm .  
 Inches: 48x24x34+6"  
 Bowl Size: 19.5x16x9.5"(deep)



**SINK3**  
**THREE SINK UNIT WITH SPLASH-BACK**  
 Dimensions: 1800x600x850+150mm  
 Inches: 72x24x34+6"  
 Bowl Size: 19.5x16x9.5"(deep)



**SINK WT**  
**WORK TABLE WITH SINK**  
 With Splash-back  
 • Dim. : 1200x600x850+150mm.  
 • Inches: 48x24x34+6"  
 • Bowl Size: 19.5x16x9.5"(deep)  
 • Bowl on RHS & LHS both available.



**SINK POT**  
**POT SINK**  
 With Splash-back  
 • Dim. : 1000x700x850+150mm.  
 • Inches: 40x28x34+6"  
 • Bowl Size: 34x20x8"(deep)

### SS GREASE TRAP



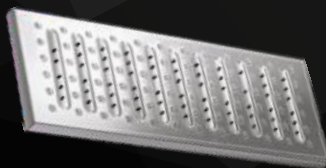
The purpose of a grease trap is to reduce the amount of fats, oils and greases to enter the main sewers & avoid blockages, foul odours and pest infestation due to it.

**GT01** 400x250x240mm.      **GT02** 500x300x290mm      **GT03** 600x410x310mm

We have mentioned standard dimensiond. We also make custom made sizes as per client's requirements.



**SINK WALL 450**  
**WALL MOUNTED SINK**  
**PUSH TYPE**  
 • Dimensions: 450x450x240+35mm.  
 • Inches: 18x18x1.5"  
 • Push type operating for convenience

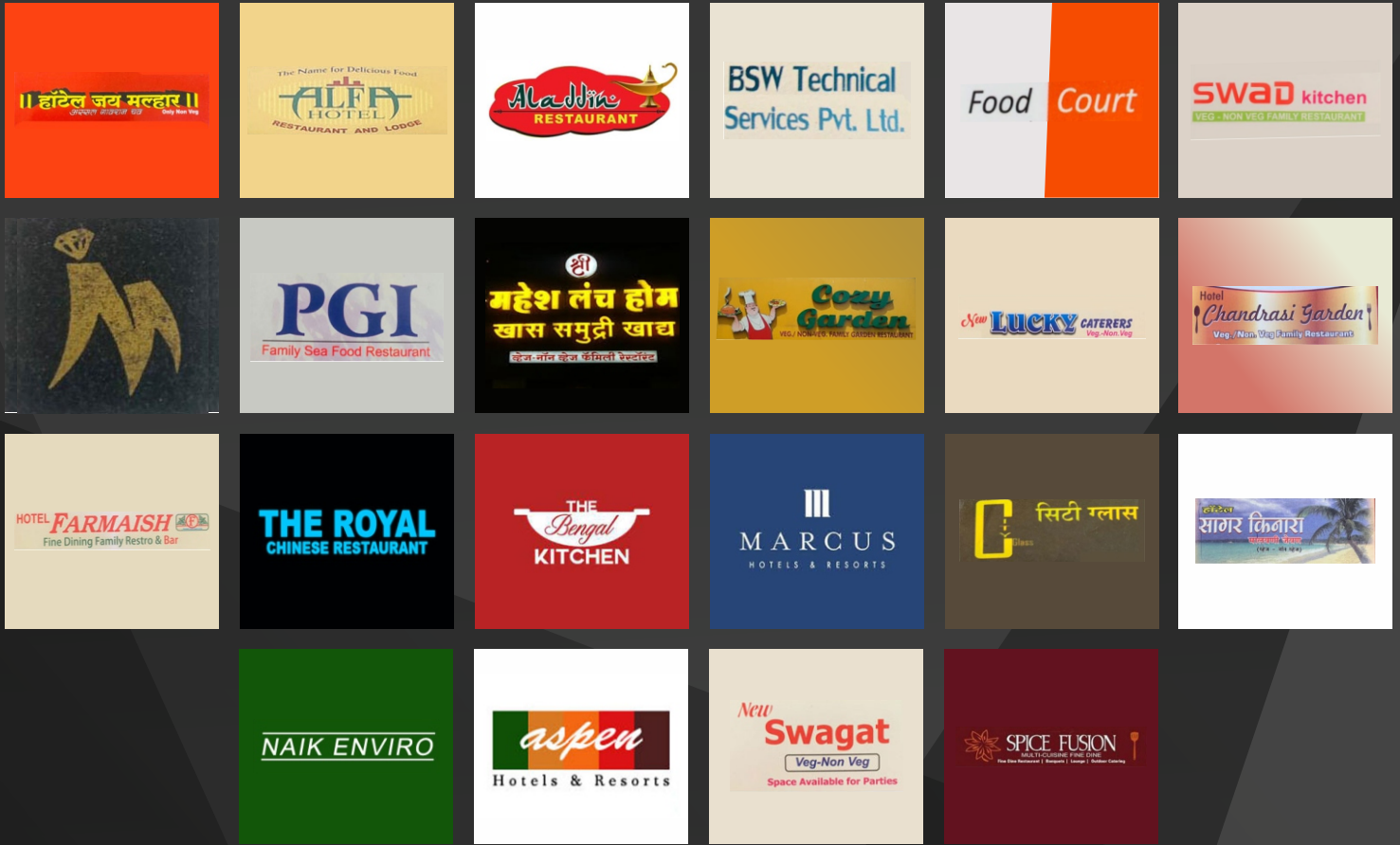


**DCS**  
**DRAIN COVER**  
 Dimensions: 580x195x30mm  
 Inches: 22.8 x 7.7x1"  
 SS Thickness: 1.2mm



**WALL SHELF FOR ABOVE SINK**  
**WSPIPE 600**    **WSPIPE 900**    **WSPIPE 1200**  
 600x300mm    900x300mm    1200x300mm  
 24x12"            36x12"            48x12"





Industrial Clients





---

**Call : (+91) 97 6664 1022**

**Email : [info@kitchenequipmentpune.com](mailto:info@kitchenequipmentpune.com)**

**Web : [www.kitchenequipmentpune.com](http://www.kitchenequipmentpune.com) | [www.punekitchen.com](http://www.punekitchen.com)**

**Add : Opp. Tawakala Masjid, Ayappa Mandir Road, Bheemrao Bhosle Chowk,  
Nehru Nagar Road, Gandhi Nagar, Pimpri, Pune - 411 018**